

DLAT Rabbit pAb

Catalog No.: A28481

Basic Information

Observed MW

69 kDa

Calculated MW

68 kDa

Category

Primary antibody

Applications

WB,IF/ICC,IF-P,IHC-P,ELISA

Cross-Reactivity

Human, Mouse, Rat

Background

Enables acetyltransferase activity. Involved in pyruvate catabolic process and pyruvate decarboxylation to acetyl-CoA. Located in mitochondrion and myelin sheath. Is active in mitochondrial matrix. Is expressed in several structures, including alimentary system; genitourinary system; heart; nervous system; and respiratory system. Human ortholog(s) of this gene implicated in pyruvate decarboxylase deficiency. Orthologous to human DLAT (dihydrolipoamide S-acetyltransferase).

Recommended Dilutions

WB 1:1000 - 1:6000

IF/ICC 1:200 - 1:400

IF-P 1:200 - 1:400

IHC-P 1:500 - 1:2000

ELISA Recommended starting concentration is 1 µg/mL. Please optimize the concentration based on your specific assay requirements. For high-ratio antibody dilutions (≥1:10000) a sequential dilution method is strongly recommended to ensure measurement accuracy.

Immunogen Information

Gene ID

235339

Swiss Prot

Q8BMF4

Immunogen

Recombinant protein (or fragment). This information is considered to be commercially sensitive.

Synonyms

DLTA; PDC-E2; 6332404G05Rik

Product Information

Source

Rabbit

Isotype

IgG

Purification

Affinity purification

Storage

Store at -20°C. Avoid freeze / thaw cycles.

Buffer: PBS with 0.09% Sodium azide, 50% glycerol, pH7.3.

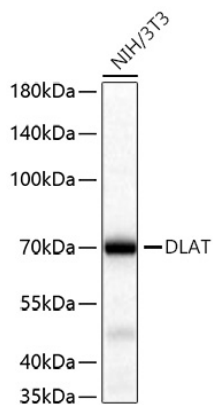
Contact

 | 400-999-6126

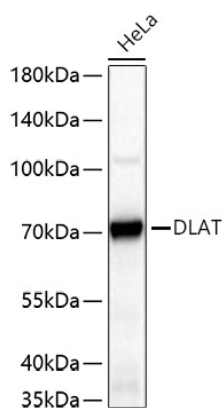
 | cn.market@abclonal.com.cn

 | www.abclonal.com.cn

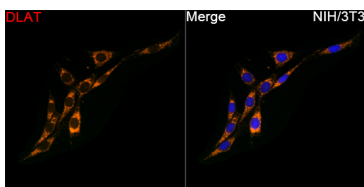
Validation Data



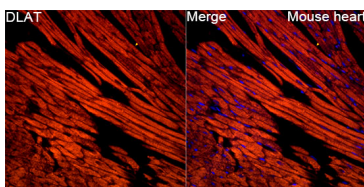
Western blot analysis of lysates from NIH/3T3 cells using DLAT Rabbit pAb (A28481) at 1:3000 dilution incubated at room temperature for 1.5 hours.
Secondary antibody: HRP-conjugated Goat anti-Rabbit IgG (H+L) (AS014) at 1:10000 dilution.
Lysates/proteins: 25 µg per lane.
Blocking buffer: 3% nonfat dry milk in TBST.
Detection: ECL Basic Kit (RM00020).
Exposure time: 1 s.



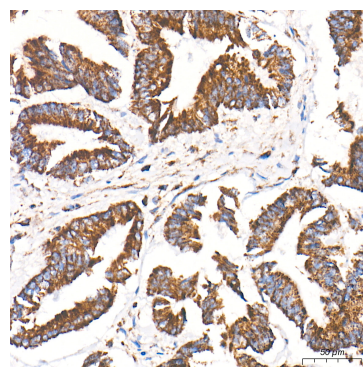
Western blot analysis of lysates from HeLa cells using DLAT Rabbit pAb (A28481) at 1:3000 dilution incubated at room temperature for 1.5 hours.
Secondary antibody: HRP-conjugated Goat anti-Rabbit IgG (H+L) (AS014) at 1:10000 dilution.
Lysates/proteins: 25 µg per lane.
Blocking buffer: 3% nonfat dry milk in TBST.
Detection: ECL Basic Kit (RM00020).
Exposure time: 10 s.



Immunofluorescence analysis of NIH/3T3 cells using DLAT Rabbit pAb (A28481) at a dilution of 1:200 (40x lens). Secondary antibody: Cy3-conjugated Goat anti-Rabbit IgG (H+L) (AS007) at 1:500 dilution. Blue: DAPI for nuclear staining.

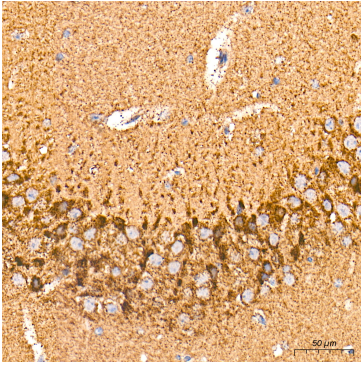


Immunofluorescence analysis of Mouse heart tissue using DLAT Rabbit pAb (A28481) at a dilution of 1:200 (40x lens). Secondary antibody: Cy3-conjugated Goat anti-Rabbit IgG (H+L) (AS007) at 1:500 dilution. Blue: DAPI for nuclear staining. High pressure antigen retrieval performed with 0.01M Citrate Buffer (pH 6.0) prior to IF staining.

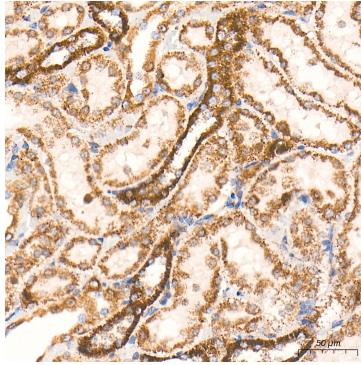


Immunohistochemistry analysis of paraffin-embedded Human colon carcinoma tissue using DLAT Rabbit pAb (A28481) at a dilution of 1:600 (40x lens). High pressure antigen retrieval performed with 0.01M Tris-EDTA Buffer (pH 9.0) prior to IHC staining.

Validation Data



Immunohistochemistry analysis of paraffin-embedded Mouse brain tissue using DLAT Rabbit pAb (A28481) at a dilution of 1:600 (40x lens). High pressure antigen retrieval performed with 0.01M Tris-EDTA Buffer (pH 9.0) prior to IHC staining.



Immunohistochemistry analysis of paraffin-embedded Rat kidney tissue using DLAT Rabbit pAb (A28481) at a dilution of 1:600 (40x lens). High pressure antigen retrieval performed with 0.01M Tris-EDTA Buffer (pH 9.0) prior to IHC staining.