

# PE Rabbit anti-Mouse CD18 mAb

Catalog No.: A28461

## Basic Information

### Observed MW

### Calculated MW

85 kDa

### Category

Primary antibody

### Applications

FC

### Cross-Reactivity

Mouse

### CloneNo number

ARC79072

### Conjugate

PE. Ex:565nm. Em:574nm.

## Background

CD18, also known as the integrin beta 2 subunit. It is expressed on all leukocytes. CD18 associates with integrin alpha chains CD11a, CD11b, and CD11c to form LFA-1 (CD11a/CD18), Mac-1 (CD11b/CD18), and  $\alpha X\beta 2$  (CD11c/CD18), respectively, playing a critical role in leukocyte adhesion. The CD18 integrin complexes bind to ligands such as ICAM-1 (CD54), ICAM-2 (CD102), ICAM-3 (CD50), iC3b, and fibrinogen. The M18/2 antibody is capable of blocking tumor cell metastasis and enhancing cell adhesion.

## Recommended Dilutions

FC  $\leq 0.25 \mu\text{g}$  per million cells  
in 100  $\mu\text{l}$  volume

## Immunogen Information

### Gene ID

16414

### Swiss Prot

P11835

### Immunogen

Recombinant protein (or fragment). This information is considered to be commercially sensitive.

### Synonyms

2E6; LAD; Cd18; Lfa1; MF17; LCAMB

## Contact

☎ | 400-999-6126

✉ | [cn.market@abclonal.com.cn](mailto:cn.market@abclonal.com.cn)

🌐 | [www.abclonal.com.cn](http://www.abclonal.com.cn)

## Product Information

### Source

Rabbit

### Isotype

IgG

### Purification

Affinity purification

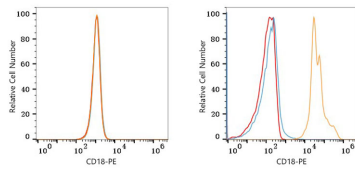
### Storage

Store at 2-8°C. Avoid freeze.

Buffer: PBS with 0.09% Sodium azide, 0.2% BSA, pH7.3.

## Validation Data

---



Flow cytometry:  $1 \times 10^6$  Neuro-2a cells (low expression, left) and C57BL/6 mouse splenocytes (right) were surface-stained with PE Rabbit anti-Mouse CD18 mAb (A28461, 0.25  $\mu$ g, orange line) or PE Rabbit IgG isotype control (A24172, 5  $\mu$ l/Test, blue line). Non-fluorescently stained cells were used as blank control (red line).