

Caspase-8 Rabbit mAb

Catalog No.: A28460 **Recombinant**

Basic Information

Observed MW

57 kDa(pro)/43 kDa(cleavad)

Calculated MW

55 kDa

Category

Primary antibody

Applications

WB,IP,IF/ICC,ELISA

Cross-Reactivity

Mouse

CloneNo number

ARC78855

Background

This gene is part of a family of caspases, aspartate-specific cysteine proteases well studied for their involvement in immune and apoptosis signaling. This protein, an initiator of apoptotic cell death, is activated by death-inducing tumor necrosis family receptors and targets downstream effectors. In mouse deficiency of this gene can cause embryonic lethality. This protein may have a role in embryogenesis. Alternative splicing results in multiple transcript variants that encode different protein isoforms.

Recommended Dilutions

WB	1:3000 - 1:10000
IP	0.5µg-4µg antibody for 200µg-400µg
IF/ICC	1:200 - 1:400
ELISA	Recommended starting concentration is 1 µg/mL. Please optimize the concentration based on your specific assay requirements. For high-ratio antibody dilutions ($\geq 1:10000$) a sequential dilution method is strongly recommended to ensure measurement accuracy.

Immunogen Information

Gene ID	Swiss Prot
12370	O89110

Immunogen

Recombinant protein (or fragment). This information is considered to be commercially sensitive.

Synonyms

MACH; Mch5; FLICE; CASP-8; Caspase-8

Product Information

Source	Isotype	Purification
Rabbit	IgG	Affinity purification

Storage

Store at -20°C. Avoid freeze / thaw cycles.

Buffer: PBS with 0.09% Sodium azide, 0.05% BSA, 50% glycerol, pH7.3.

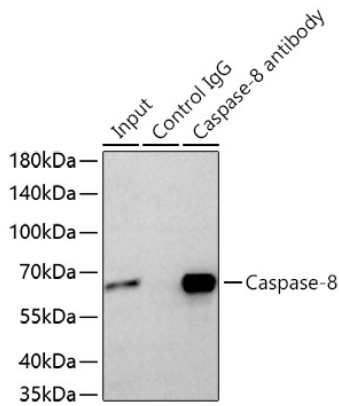
Contact

 | 400-999-6126

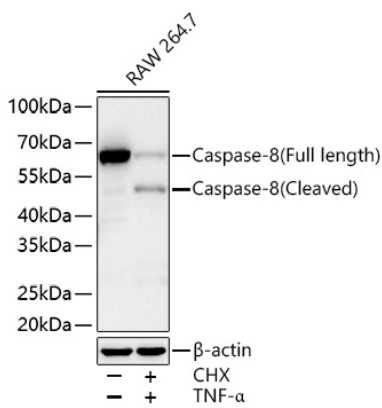
 | cn.market@abclonal.com.cn

 | www.abclonal.com.cn

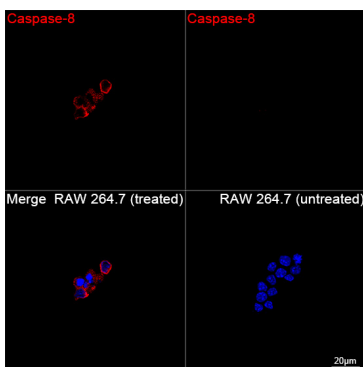
Validation Data



Immunoprecipitation of Caspase-8 from 300 µg extracts of RAW 264.7 cells was performed using 1 µg of Caspase-8 Rabbit mAb (A28460). Rabbit Control IgG (AC005) was used to precipitate the Control IgG sample. IP samples were eluted with 1x Laemmli Buffer. The Input lane represents 10% of the total input. Western blot analysis of immunoprecipitates was conducted using Caspase-8 Rabbit mAb (A28460) at a dilution of 1:10000.



Western blot analysis of lysates from RAW 264.7 cells using Caspase-8 Rabbit mAb (A28460) at 1:6000 dilution incubated overnight at 4°C. RAW 264.7 cells were treated with CHX (10 µg/mL) at 37 °C for overnight, treated with TNF-α (200 ng/mL) at 37 °C for 4 hours. Secondary antibody: HRP-conjugated Goat anti-Rabbit IgG (H+L) (AS014) at 1:10000 dilution. Lysates/proteins: 30 µg per lane. Blocking buffer: 3% nonfat dry milk in TBST. Detection: ECL Basic Kit (RM00020). Exposure time: 20 s.



Confocal imaging of RAW 264.7 cells (treated with CHX and TNF-α) and RAW 264.7 cells (untreated) using Caspase-8 Rabbit mAb (A28460, dilution 1:200) followed by a further incubation with Cy3-conjugated Goat anti-Rabbit IgG (H+L) (AS007, dilution 1:500) (Red). DAPI was used for nuclear staining (Blue). Objective: 100x.