

# GLUT4 Rabbit mAb

Catalog No.: A28417 **Recombinant**

## Basic Information

### Observed MW

50 kDa

### Calculated MW

55 kDa/44 kDa

### Category

Primary antibody

### Applications

WB,IF-P,IHC-P,ELISA

### Cross-Reactivity

Human, Mouse, Rat

### CloneNo number

ARC79145

## Background

This gene is a member of the solute carrier family 2 (facilitated glucose transporter) family and encodes a protein that functions as an insulin-regulated facilitative glucose transporter. In the absence of insulin, this integral membrane protein is sequestered within the cells of muscle and adipose tissue. Within minutes of insulin stimulation, the protein moves to the cell surface and begins to transport glucose across the cell membrane. Mutations in this gene have been associated with noninsulin-dependent diabetes mellitus (NIDDM).

## Recommended Dilutions

**WB** 1:6000 - 1:40000

**IF-P** 1:100 - 1:400

**IHC-P** 1:5000 - 1:20000

**ELISA** Recommended starting concentration is 1 µg/mL. Please optimize the concentration based on your specific assay requirements. For high-ratio antibody dilutions ( $\geq 1:10000$ ) a sequential dilution method is strongly recommended to ensure measurement accuracy.

## Immunogen Information

### Gene ID

6517

### Swiss Prot

P14672

### Immunogen

Synthetic peptide. This information is considered to be commercially sensitive.

### Synonyms

GLUT4

## Product Information

### Source

Rabbit

### Isotype

IgG

### Purification

Affinity purification

### Storage

Store at -20°C. Avoid freeze / thaw cycles.

Buffer: PBS with 0.09% Sodium azide, 0.05% BSA, 50% glycerol, pH7.3.

## Contact

---

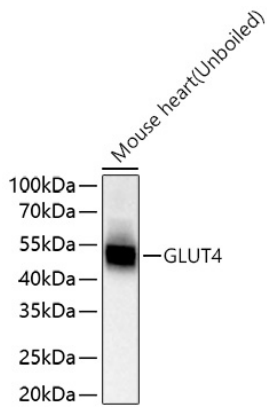
 | 400-999-6126

 | [cn.market@abclonal.com.cn](mailto:cn.market@abclonal.com.cn)

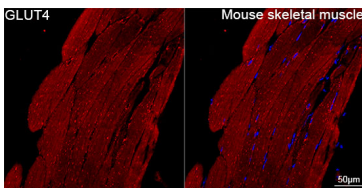
 | [www.abclonal.com.cn](http://www.abclonal.com.cn)

---

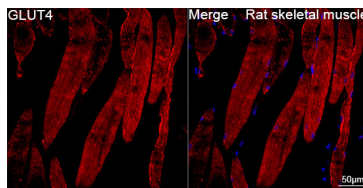
## Validation Data



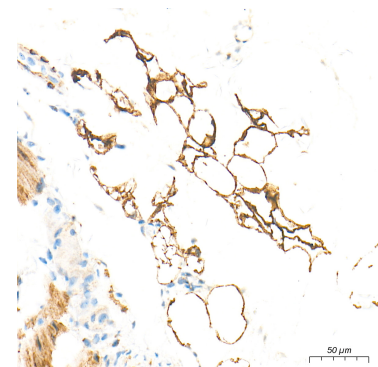
Western blot analysis of lysates from Mouse heart using GLUT4 Rabbit mAb (A28417) at 1:20000 dilution incubated overnight at 4°C.  
 Secondary antibody: HRP-conjugated Goat anti-Rabbit IgG (H+L) (AS014) at 1:10000 dilution.  
 Lysates/proteins: 25 µg per lane.  
 Blocking buffer: 3% nonfat dry milk in TBST.  
 Detection: ECL Basic Kit (RM00020).  
 Exposure time: 10 s.



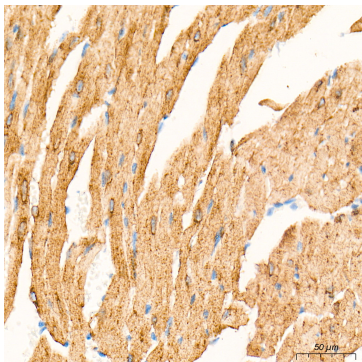
Confocal imaging of paraffin-embedded Mouse skeletal muscle tissue using GLUT4 Rabbit mAb (A28417, dilution 1:200) followed by a further incubation with Cy3-conjugated Goat anti-Rabbit IgG (H+L) (AS007, dilution 1:500) (Red). DAPI was used for nuclear staining (Blue). High pressure antigen retrieval performed with 0.01M Citrate Buffer (pH 6.0) prior to IF staining. Objective: 40x.



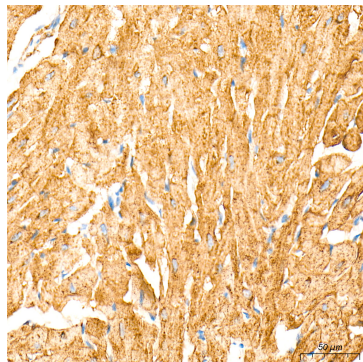
Confocal imaging of paraffin-embedded Rat skeletal muscle tissue using GLUT4 Rabbit mAb (A28417, dilution 1:200) followed by a further incubation with Cy3-conjugated Goat anti-Rabbit IgG (H+L) (AS007, dilution 1:500) (Red). DAPI was used for nuclear staining (Blue). High pressure antigen retrieval performed with 0.01M Citrate Buffer (pH 6.0) prior to IF staining. Objective: 40x.



Immunohistochemistry analysis of paraffin-embedded Mouse fat tissue using GLUT4 Rabbit mAb (A28417) at a dilution of 1:10000 (40x lens). High pressure antigen retrieval performed with 0.01M Tris-EDTA Buffer (pH 9.0) prior to IHC staining.



Immunohistochemistry analysis of paraffin-embedded Mouse heart tissue using GLUT4 Rabbit mAb (A28417) at a dilution of 1:10000 (40x lens). High pressure antigen retrieval performed with 0.01M Tris-EDTA Buffer (pH 9.0) prior to IHC staining.



Immunohistochemistry analysis of paraffin-embedded Rat heart tissue using GLUT4 Rabbit mAb (A28417) at a dilution of 1:10000 (40x lens). High pressure antigen retrieval performed with 0.01M Tris-EDTA Buffer (pH 9.0) prior to IHC staining.