

Rabbit anti-Mouse CD5(scfv) mAb

Catalog No.: A28407

Basic Information

Observed MW

Refer to figures

Calculated MW

54kDa

Category

Primary antibody

Applications

FC

Cross-Reactivity

Mouse

CloneNo number

ARC61613_M1(scfv)

Background

CD5 is a type I transmembrane protein belonging to the scavenger receptor cysteine-enriched (SRCR) family, characterized by the presence of at least one SRCR domain containing 90-110 amino acids. CD5 is expressed in all mature T cells, B-1A subsets of mature B cells, and certain leukemia B cells. It is elevated in regulatory T and B cells (Tregs/Bregs). CD5 expression was also elevated in incompetent T and B cells. Elevated levels of CD5 have also been found in many autoimmune diseases. CD5 binds to T cell receptors (TCR) and negatively regulates T cell activation and differentiation. The expression of CD5 in tumor-infiltrating T lymphocytes was negatively correlated with their antitumor activity. Recently, it has been reported that CD5 binds directly to IL6 and mediates downstream signal transduction. CD5+ B cells promote tumor growth in animal models. Agents targeting CD5 are being actively explored as therapeutic interventions for cancer and other conditions.

Recommended Dilutions

FC 1:100 - 1:500

Immunogen Information

Gene ID

12507

Swiss Prot

P13379

Immunogen

This information is considered to be commercially sensitive.

Synonyms

Ly-1; Ly-A; Ly-12; Lyt-1

Contact

 | 400-999-6126 | cn.market@abclonal.com.cn | www.abclonal.com.cn

Product Information

Source

Rabbit

Isotype

IgG

Purification

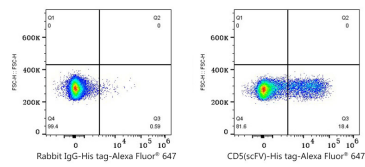
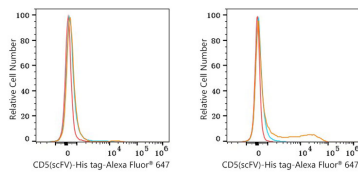
Affinity purification

Storage

Store at 2-8°C. Avoid freeze.

Buffer: PBS with 2mM DTT,pH7.3

Validation Data



Flow cytometry: 1×10^6 A20 cells (negative control, left) and C57BL/6 mouse splenocytes (right) were surface-stained with Rabbit anti-Mouse CD5(scFv) mAb (A28407, 2 $\mu\text{g}/\text{mL}$, orange line) or Rabbit IgG isotype control (AC042, 2 $\mu\text{g}/\text{mL}$, blue line), followed by Alexa Fluor® 647 His tag staining. Non-fluorescently stained cells were used as blank control (red line).

Flow cytometry: 1×10^6 C57BL/6 mouse splenocytes were surface-stained with Rabbit IgG isotype control (AC042, 2 $\mu\text{g}/\text{mL}$, left) or Rabbit anti-Mouse CD5(scFv) mAb (A28407, 2 $\mu\text{g}/\text{mL}$, right), followed by Alexa Fluor® 647 His tag staining.