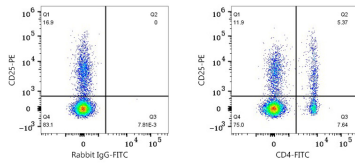


Validation Data



Flow cytometry: 1×10^6 Chicken PBMC were surface-stained with PE Rabbit anti-Chicken CD25 mAb (A28169, 0.5 μ g) and FITC Rabbit IgG isotype control (A25616, 5 μ l/Test, left) or FITC Rabbit anti-Chicken CD4 mAb (A28397, 0.25 μ g, right). Cells in the lymphocyte gate were used for analysis.