

Filaggrin Rabbit mAb

Catalog No.: A28376 **Recombinant**

Basic Information

Observed MW

Refer to figures

Calculated MW

435 kDa

Category

Primary antibody

Applications

IF-P, IHC-P, ELISA

Cross-Reactivity

Human

CloneNo number

ARC79014

Background

The protein encoded by this gene is an intermediate filament-associated protein that aggregates keratin intermediate filaments in mammalian epidermis. It is initially synthesized as a polypeptide precursor, profilaggrin (consisting of multiple filaggrin units of 324 aa each), which is localized in keratohyalin granules, and is subsequently proteolytically processed into individual functional filaggrin molecules. Mutations in this gene are associated with ichthyosis vulgaris.

Recommended Dilutions

IF-P 1:200 - 1:400

IHC-P 1:20000 - 1:80000

ELISA Recommended starting concentration is 1 µg/mL. Please optimize the concentration based on your specific assay requirements. For high-ratio antibody dilutions (≥1:10000) a sequential dilution method is strongly recommended to ensure measurement accuracy.

Immunogen Information

Gene ID

2312

Swiss Prot

P20930

Immunogen

Recombinant protein (or fragment). This information is considered to be commercially sensitive.

Synonyms

FLG1; ATOD2; FLG-1

Product Information

Source

Rabbit

Isotype

IgG

Purification

Affinity purification

Storage

Store at -20°C. Avoid freeze / thaw cycles.

Buffer: PBS with 0.09% Sodium azide, 0.05% BSA, 50% glycerol, pH7.3.

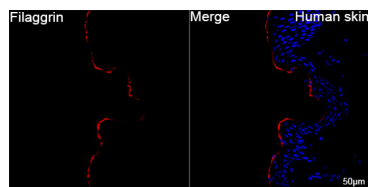
Contact

☎ | 400-999-6126

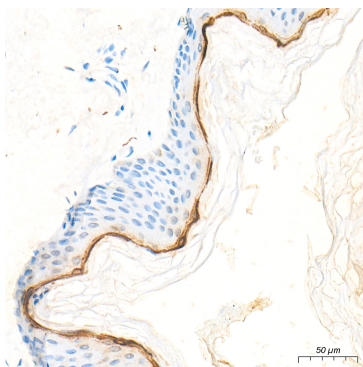
✉ | cn.market@abclonal.com.cn

🌐 | www.abclonal.com.cn

Validation Data



Confocal imaging of paraffin-embedded Human skin tissue using Filaggrin Rabbit mAb (A28376, dilution 1:200) followed by a further incubation with Cy3-conjugated Goat Anti-Rabbit IgG (H+L) (AS007, dilution 1:500) (Red). DAPI was used for nuclear staining (Blue). High pressure antigen retrieval performed with 0.01M Citrate Buffer (pH 6.0) prior to IF staining. Objective: 40x.



Immunohistochemistry analysis of paraffin-embedded Human skin tissue using Filaggrin Rabbit mAb (A28376) at a dilution of 1:20000 (40x lens). High pressure antigen retrieval performed with 0.01M Tris-EDTA Buffer (pH 9.0) prior to IHC staining.