

Serotonin transporter Rabbit pAb

Catalog No.: A28369

Basic Information

Observed MW

83 kDa

Calculated MW

70 kDa

Category

Primary antibody

Applications

WB, IHC-P, ELISA

Cross-Reactivity

Mouse, Rat

Background

Enables neurotransmitter transmembrane transporter activity; nitric-oxide synthase binding activity; and serotonin:sodium:chloride symporter activity. Involved in several processes, including nervous system development; platelet aggregation; and serotonin uptake. Located in focal adhesion and synapse. Is expressed in several structures, including early conceptus; heart; liver; nervous system; and ovary. Used to study autism spectrum disorder and sudden infant death syndrome. Human ortholog(s) of this gene implicated in several diseases, including alcohol dependence; anxiety disorder (multiple); depressive disorder (multiple); heart disease (multiple); and substance abuse (multiple). Orthologous to human SLC6A4 (solute carrier family 6 member 4).

Recommended Dilutions

WB 1:1000 - 1:2000**IHC-P** 1:100 - 1:400

ELISA Recommended starting concentration is 1 µg/mL. Please optimize the concentration based on your specific assay requirements. For high-ratio antibody dilutions ($\geq 1:10000$) a sequential dilution method is strongly recommended to ensure measurement accuracy.

Immunogen Information

Gene ID

15567

Swiss Prot

Q60857

Immunogen

Recombinant protein (or fragment). This information is considered to be commercially sensitive.

Synonyms

Htt; Sert; 5-HTT

Product Information

Source

Rabbit

Isotype

IgG

Purification

Affinity purification

Storage

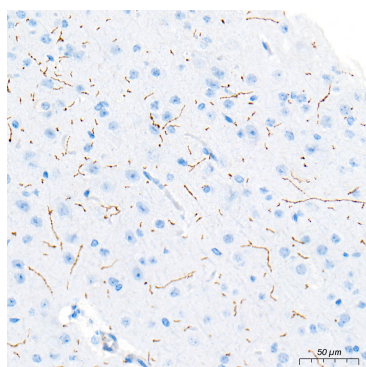
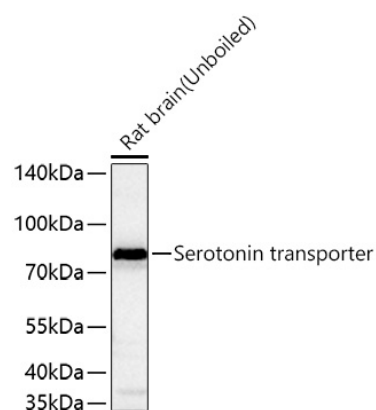
Store at -20°C. Avoid freeze / thaw cycles.

Buffer: PBS with 0.09% Sodium azide, 50% glycerol, pH7.3.

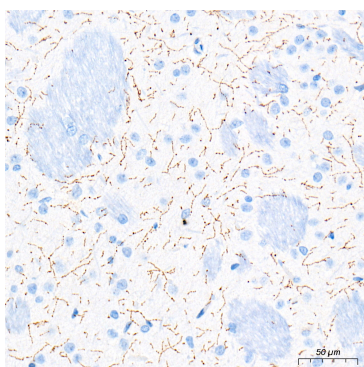
Contact

 | 400-999-6126 | cn.market@abclonal.com.cn | www.abclonal.com.cn

Validation Data



Immunohistochemistry analysis of paraffin-embedded Mouse brain tissue using Serotonin transporter Rabbit pAb (A28369) at a dilution of 1:300 (40x lens). High pressure antigen retrieval performed with 0.01M Tris-EDTA Buffer (pH 9.0) prior to IHC staining.



Immunohistochemistry analysis of paraffin-embedded Rat brain tissue using Serotonin transporter Rabbit pAb (A28369) at a dilution of 1:300 (40x lens). High pressure antigen retrieval performed with 0.01M Tris-EDTA Buffer (pH 9.0) prior to IHC staining.