

PE Rabbit anti-Rat CD25 mAb

Catalog No.: A28355

Basic Information

Observed MW

Calculated MW

31 kDa

Category

Primary antibody

Applications

FC

Cross-Reactivity

Rat

CloneNo number

ARC77809

Conjugate

PE. Ex:565nm. Em:574nm.

Background

CD25, also known as the interleukin-2 receptor alpha chain (IL-2R α). It is widely expressed on activated T and B cells in rats, subsets of thymic and splenic dendritic cells, as well as on intestinal epithelial cells. IL-2 is a key cytokine involved in lymphocyte proliferation and clonal expansion. Signaling through IL-2 requires the high-affinity IL-2 receptor, which is composed of the α (CD25), β (CD122), and γ (CD132) chains.

Recommended Dilutions

FC ≤ 0.25 μ g per million cells
in 100 μ l volume

Immunogen Information

Gene ID

25704

Swiss Prot

P26897

Immunogen

Recombinant protein (or fragment). This information is considered to be commercially sensitive.

Synonyms

IL2RAC

Contact

☎ | 400-999-6126

✉ | cn.market@abclonal.com.cn

🌐 | www.abclonal.com.cn

Product Information

Source

Rabbit

Isotype

IgG

Purification

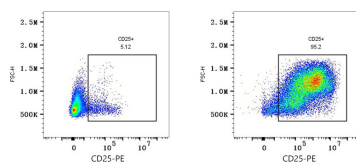
Affinity purification

Storage

Store at 2-8°C. Avoid freeze.

Buffer: PBS with 0.09% Sodium azide, 0.2% BSA, pH7.3.

Validation Data



Flow cytometry: 1×10^6 Rat splenocytes (untreated, left) and Rat splenocytes (treated with ConA for 3 days, right) were surface-stained with PE Rabbit anti-Rat CD25 mAb (A28355, 0.25 μ g).