

ZBP1 Rabbit pAb

Catalog No.: A28338

Basic Information

Observed MW

42-62 kDa

Calculated MW

44 kDa/21 kDa

Category

Primary antibody

Applications

WB,IF/ICC,IF-P,IHC-P,ELISA

Cross-Reactivity

Mouse

Background

Enables double-stranded RNA binding activity and left-handed Z-DNA binding activity. Involved in several processes, including defense response to other organism; positive regulation of defense response; and positive regulation of programmed cell death. Acts upstream of or within positive regulation of type I interferon-mediated signaling pathway. Located in cytoplasm and nucleus. Is expressed in eye and heart. Orthologous to human ZBP1 (Z-DNA binding protein 1).

Recommended Dilutions

WB 1:3000 - 1:12000

IF/ICC 1:100 - 1:400

IF-P 1:100 - 1:400

IHC-P 1:500 - 1:2000

ELISA Recommended starting concentration is 1 µg/mL. Please optimize the concentration based on your specific assay requirements. For high-ratio antibody dilutions (≥1:10000) a sequential dilution method is strongly recommended to ensure measurement accuracy.

Immunogen Information

Gene ID

58203

Swiss Prot

Q9QY24

Immunogen

Recombinant protein (or fragment). This information is considered to be commercially sensitive.

Synonyms

Dai; DIm1; mZaDLM; 2010010H03Rik

Product Information

Source

Rabbit

Isotype

IgG

Purification

Affinity purification

Storage

Store at -20°C. Avoid freeze / thaw cycles.

Buffer: PBS with 0.09% Sodium azide, 50% glycerol, pH7.3.

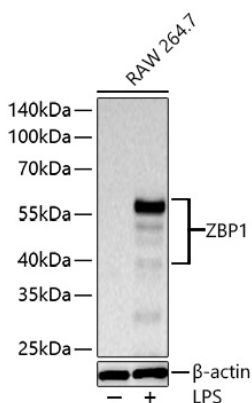
Contact

☎ | 400-999-6126

✉ | cn.market@abclonal.com.cn

🌐 | www.abclonal.com.cn

Validation Data



Western blot analysis of lysates from RAW 264.7 cells using ZBP1 Rabbit pAb (A28338) at 1:5000 dilution incubated at room temperature for 1.5 hours. RAW 264.7 cells were treated with LPS (1 μ g/mL) at 37°C for 7 hours.

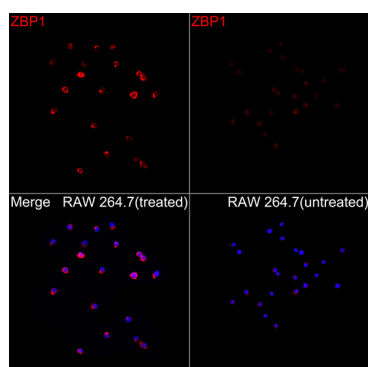
Secondary antibody: HRP-conjugated Goat anti-Rabbit IgG (H+L) (AS014) at 1:10000 dilution.

Lysates/proteins: 30 μ g per lane.

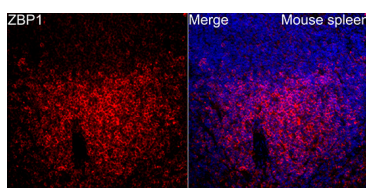
Blocking buffer: 3% nonfat dry milk in TBST.

Detection: ECL Basic Kit (RM00020).

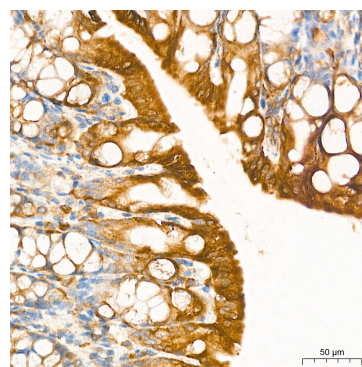
Exposure time: 20 s.



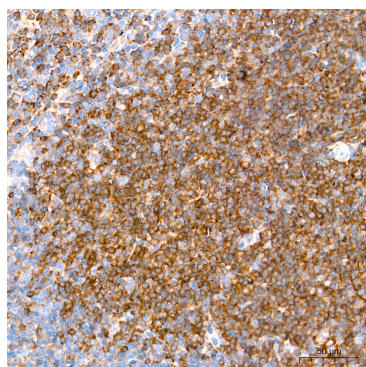
Immunofluorescence analysis of RAW 264.7 cells (treated with LPS) and RAW 264.7 cells (untreated) using ZBP1 Rabbit pAb (A28338) at a dilution of 1:100 (40x lens). Secondary antibody: Cy3-conjugated Goat anti-Rabbit IgG (H+L)(AS007) at 1:500 dilution. Blue: DAPI for nuclear staining.



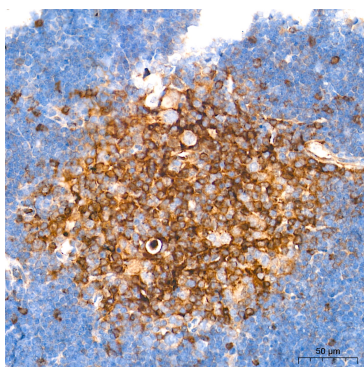
Immunofluorescence analysis of Mouse spleen tissue using ZBP1 Rabbit pAb (A28338) at a dilution of 1:100 (40x lens). Secondary antibody: Cy3-conjugated Goat anti-Rabbit IgG (H+L)(AS007) at 1:500 dilution. Blue: DAPI for nuclear staining. High pressure antigen retrieval performed with 0.01M Citrate Buffer (pH 6.0) prior to IF staining.



Immunohistochemistry analysis of paraffin-embedded Human colon tissue using ZBP1 Rabbit pAb (A28338) at a dilution of 1:1000 (40x lens). High pressure antigen retrieval performed with 0.01M Tris-EDTA Buffer (pH 9.0) prior to IHC staining.



Immunohistochemistry analysis of paraffin-embedded Mouse spleen tissue using ZBP1 Rabbit pAb (A28338) at a dilution of 1:1000 (40x lens). High pressure antigen retrieval performed with 0.01M Tris-EDTA Buffer (pH 9.0) prior to IHC staining.



Immunohistochemistry analysis of paraffin-embedded Mouse thymus tissue using ZBP1 Rabbit pAb (A28338) at a dilution of 1:1000 (40x lens). High pressure antigen retrieval performed with 0.01M Tris-EDTA Buffer (pH 9.0) prior to IHC staining.