

ABflo® 700 Rabbit anti-Mouse CD45.1 mAb

Catalog No.: A28333

Basic Information

Observed MW

Calculated MW

130 kDa/140 kDa/144 kDa

Category

Primary antibody

Applications

FC

Cross-Reactivity

Mouse

CloneNo number

ARC73318

Conjugate

ABflo® 700. Ex:690nm. Em:713nm.

Background

Enables several functions, including heparan sulfate proteoglycan binding activity; heparin binding activity; and protein tyrosine phosphatase activity. Involved in several processes, including lymphocyte differentiation; positive regulation of macromolecule metabolic process; and regulation of signal transduction. Acts upstream of or within several processes, including lymphocyte differentiation; positive regulation of lymphocyte activation; and regulation of protein phosphorylation. Located in external side of plasma membrane; focal adhesion; and membrane raft. Is expressed in several structures, including 3rd branchial arch; alimentary system; cardiovascular system; hemolymphoid system; and placenta. Used to study systemic lupus erythematosus. Human ortholog(s) of this gene implicated in hepatitis C; multiple sclerosis; severe combined immunodeficiency; and severe combined immunodeficiency, autosomal recessive, T cell-negative, B cell-positive, Nk cell-positive. Orthologous to human PTPRC (protein tyrosine phosphatase receptor type C).

Recommended Dilutions

FC ≤0.5 µg per million cells
in 100 µl volume

Immunogen Information

Gene ID

19264

Swiss Prot

P06800

Immunogen

Synthetic peptide. This information is considered to be commercially sensitive.

Synonyms

loc; B220; Cd45; L-CA; Ly-5; T200; CD45R; Lyt-4

Contact

☎ | 400-999-6126

✉ | cn.market@abclonal.com.cn

🌐 | www.abclonal.com.cn

Product Information

Source

Rabbit

Isotype

IgG

Purification

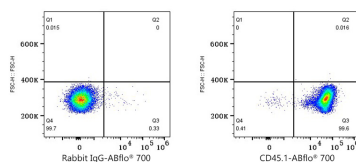
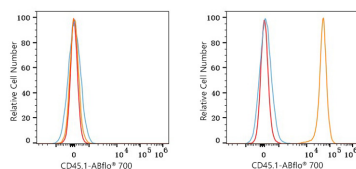
Affinity purification

Storage

Store at 2-8°C. Avoid freeze.

Buffer: PBS with 0.09% Sodium azide, 0.2% BSA, pH7.3.

Validation Data



Flow cytometry: 1X10⁶ C57BL/6 mouse splenocytes (negative control, left) and SJL mouse splenocytes (right) were surface-stained with ABflo® 700 Rabbit anti-Mouse CD45.1 mAb (A28333, 0.5 µg, orange line) or ABflo® 700 Rabbit IgG isotype control (A25976, 5 µl/Test, blue line). Non-fluorescently stained cells were used as blank control (red line).

Flow cytometry: 1X10⁶ SJL mouse splenocytes were surface-stained with ABflo® 700 Rabbit IgG isotype control (A25976, 5 µl/Test, left) or ABflo® 700 Rabbit anti-Mouse CD45.1 mAb (A28333, 0.5 µg, right).