

ABflo® 610 Rabbit anti-Human NAT10 mAb

Catalog No.: A28330

Basic Information

Observed MW

Refer to figures

Calculated MW

116 kDa

Category

Primary antibody

Applications

FC (intra)

Cross-Reactivity

Human

CloneNo number

ARC2468

Conjugate

ABflo® 610. Ex:421nm. Em:612nm.

Recommended Dilutions

FC (intra) 5 µl per 10⁶ cells in
100 µl volume

Background

N-acetyltransferase 10 (NAT10) is a member of the Gcn5-related N-acetyltransferase (GNAT) family and it plays a crucial role in various cellular processes, such as regulation of cell mitosis, post-DNA damage response, autophagy and apoptosis regulation, ribosome biogenesis, RNA modification, and other related pathways through its intrinsic protein acetyltransferase and RNA acetyltransferase activities. Moreover, NAT10 is closely associated with the pathogenesis of tumors, Hutchinson-Gilford progeria syndrome (HGPS), systemic lupus erythematosus, pulmonary fibrosis, depression and host-pathogen interactions.

Immunogen Information

Gene ID

55226

Swiss Prot

Q9H0A0

Immunogen

Recombinant protein (or fragment). This information is considered to be commercially sensitive.

Synonyms

ALP; Kre33; NET43

Contact

☎ | 400-999-6126

✉ | cn.market@abclonal.com.cn

🌐 | www.abclonal.com.cn

Product Information

Source

Rabbit

Isotype

IgG

Purification

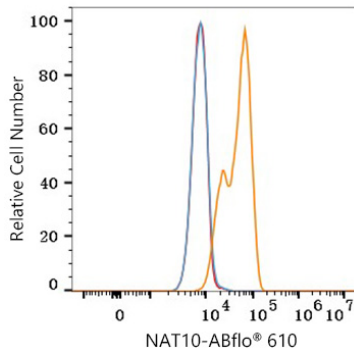
Affinity purification

Storage

Store at 2-8°C. Avoid freeze.

Buffer: PBS with 0.09% Sodium azide, 0.2% BSA, pH7.3.

Validation Data



Flow cytometry: 1×10^6 HeLa cells were intracellularly-stained with ABflo® 610 Rabbit anti-Human NAT10 mAb (A28330, 5 μ l/Test, orange line) or ABflo® 610 Rabbit IgG isotype control (A25826, 5 μ l/Test, blue line). Non-fluorescently stained cells were used as blank control (red line).