

ABflo® 450 Rabbit anti-Mouse ICOS/CD278 mAb

Catalog No.: A28296

Basic Information

Observed MW

Calculated MW

22 KDa

Category

Primary antibody

Applications

FC

Cross-Reactivity

Mouse

CloneNo number

ARC62052

Conjugate

ABflo® 450. Ex:406nm. Em:445nm.

Background

Predicted to be involved in T cell costimulation; T cell tolerance induction; and cell-cell adhesion. Located in external side of plasma membrane. Is integral component of plasma membrane. Used to study common variable immunodeficiency. Human ortholog(s) of this gene implicated in celiac disease; common variable immunodeficiency; and immunoglobulin alpha deficiency. Orthologous to human ICOS (inducible T cell costimulator).

Recommended Dilutions

FC ≤0.5 µg per million cells
in 100 µl volume

Immunogen Information

Gene ID

54167

Swiss Prot

Q9WVS0

Immunogen

Recombinant protein (or fragment). This information is considered to be commercially sensitive.

Synonyms

H4; CCLP; AILIM; CRP-1; Ly115

Contact

 | 400-999-6126

 | cn.market@abclonal.com.cn

 | www.abclonal.com.cn

Product Information

Source

Rabbit

Isotype

IgG

Purification

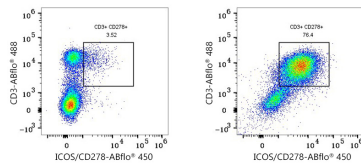
Affinity purification

Storage

Store at 2-8°C. Avoid freeze.

Buffer: PBS with 0.09% Sodium azide, 0.2% BSA, pH7.3.

Validation Data



Flow cytometry: 1X10⁶ C57BL/6 mouse splenocytes (untreated, left) and C57BL/6 mouse splenocytes (treated with anti-CD3/CD28 for 3 days, right) were surface-stained with ABflo® 488 Rat anti-Mouse CD3 mAb (A27161, 5 µl/Test) and ABflo® 450 Rabbit anti-Mouse ICOS/CD278 mAb (A28296, 0.5 µg).