

# ABflo® 488 Rabbit anti-Human CD206/MMR mAb

Catalog No.: A28285

## Basic Information

### Observed MW

### Calculated MW

166kDa

### Category

Primary antibody

### Applications

FC

### Cross-Reactivity

Human

### CloneNo number

ARC70412

### Conjugate

ABflo® 488. Ex:491nm. Em:516nm.

## Background

The mannose receptor (MR/CLEC13D/CD206/MMR/MRC1/Macrophage Mannose Receptor 1) is an endocytic receptor expressed on dendritic cells, macrophages, and avascular endothelium. It is a highly glycosylated type I transmembrane protein featuring three distinct types of extracellular domains and a short carboxyl-terminal cytoplasmic tail that lacks obvious signaling motifs. The extracellular portion of the protein comprises an N-terminal cysteine-rich (CR) domain that binds sulfated sugar chains, a single fibronectin type II (FNII) domain that binds collagen, and eight C-type lectin domains (CTLDs) that recognize carbohydrate ligands containing mannose, fucose, and N-acetylglucosamine (GlcNAc). The receptor continuously cycles between the plasma membrane and early endosomes. Its functions include mediating antigen cross-presentation, facilitating the clearance of endogenous glycoproteins (e.g., maintaining glycoprotein homeostasis), and detecting and transporting pathogens via the lymphatics. The mannose receptor is a canonical marker for M2 macrophages.

## Recommended Dilutions

FC 5 µl per 10<sup>6</sup> cells in  
100 µl volume

## Immunogen Information

### Gene ID

4360

### Swiss Prot

P22897

### Immunogen

Recombinant protein (or fragment). This information is considered to be commercially sensitive.

### Synonyms

MMR; hMR; CD206; MRC1L1; CLEC13D; CLEC13DL; bA541I19.1

## Contact

☎ | 400-999-6126

✉ | [cn.market@abclonal.com.cn](mailto:cn.market@abclonal.com.cn)

🌐 | [www.abclonal.com.cn](http://www.abclonal.com.cn)

## Product Information

### Source

Rabbit

### Isotype

IgG

### Purification

Affinity purification

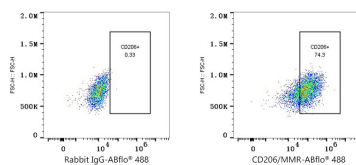
### Storage

Store at 2-8°C. Avoid freeze.

Buffer: PBS with 0.09% Sodium azide, 0.2% BSA, pH7.3.

## Validation Data

---



Flow cytometry:  $1 \times 10^6$  Human peripheral blood monocytes (treated with 20 ng/mL M-CSF for 7 days and then with 20ng/ml IL-4 and 20ng/ml IL-13 for 2 days) were surface-stained with ABflo® 488 Rabbit IgG isotype control (A22069, 5  $\mu$ l/Test, left) and ABflo® 488 Rabbit anti-Human CD206/MMR mAb (A28285, 5  $\mu$ l/Test, right).