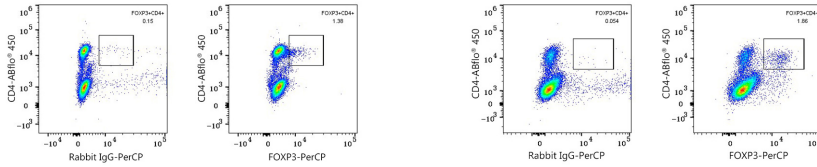


Validation Data



Flow cytometry: 1×10^6 Human PBMC were surface-stained with ABflo® 450 Rabbit anti-Human/Monkey CD4 mAb (A26523, 5 μ l/Test) , and then intracellularly-stained with PerCP Rabbit IgG isotype control (A24204, 5 μ l/Test, left) or PerCP Rabbit anti-Human/Mouse/Monkey FOXP3 mAb (A28271, 5 μ l/Test, right). Cells in the lymphocyte gate were used for analysis.

Flow cytometry: 1×10^6 C57BL/6 mouse splenocytes were surface-stained with ABflo® 450 Rabbit anti-Mouse CD4 mAb (A25941, 5 μ l/Test) , and then intracellularly-stained with PerCP Rabbit IgG isotype control (A24204, 5 μ l/Test, left) or PerCP Rabbit anti-Human/Mouse/Monkey FOXP3 mAb (A28271, 5 μ l/Test, right). Cells in the lymphocyte gate were used for analysis.