

ABflo® 488 Rabbit anti-Mouse CX3CR1 mAb

Catalog No.: A28253

Basic Information

Observed MW

Calculated MW

40 kDa

Category

Primary antibody

Applications

FC

Cross-Reactivity

Mouse

CloneNo number

ARC75635

Conjugate

ABflo® 488. Ex:491nm. Em:516nm.

Background

Enables C-X3-C chemokine binding activity and C-X3-C chemokine receptor activity. Involved in several processes, including antifungal innate immune response; central nervous system development; and synapse organization. Located in cell surface. Is expressed in several structures, including brain; colon; genitourinary system; head mesenchyme; and meninges. Used to study age related macular degeneration 12. Human ortholog(s) of this gene implicated in several diseases, including human immunodeficiency virus infectious disease; obesity; pulmonary hypertension; retinal disease (multiple); and systemic scleroderma. Orthologous to human CX3CR1 (C-X3-C motif chemokine receptor 1).

Recommended Dilutions

FC ≤0.5 µg per million cells
in 100 µl volume

Immunogen Information

Gene ID

13051

Swiss Prot

Q9Z0D9

Immunogen

Synthetic peptide. This information is considered to be commercially sensitive.

Synonyms

mCX3CR1

Contact

☎ | 400-999-6126

✉ | cn.market@abclonal.com.cn

🌐 | www.abclonal.com.cn

Product Information

Source

Rabbit

Isotype

IgG

Purification

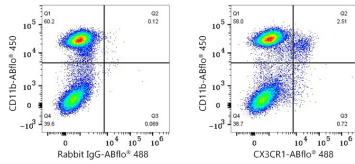
Affinity purification

Storage

Store at 2-8°C. Avoid freeze.

Buffer: PBS with 0.09% Sodium azide, 0.2% BSA, pH7.3.

Validation Data



Flow cytometry: 1X10⁶ C57BL/6 mouse bone marrow cells were surface-stained with ABflo® 450 Rabbit anti-Mouse CD11b mAb (A26229, 5 µl/Test) and ABflo® 488 Rabbit IgG isotype control (A22069, 5 µl/Test, left) or ABflo® 488 Rabbit anti-Mouse CX3CR1 mAb (A28253, 0.5 µg, right).