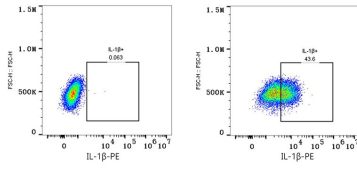




## Validation Data

---



Flow cytometry:  $1 \times 10^6$  RAW 264.7 cells (untreated, left) and RAW 264.7 cells (treated with 100ng/ml LPS for 4h and then with 1 $\mu$ g/ml BFA for another 3h, right) were intracellularly-stained with PE Rabbit anti-Mouse IL-1 $\beta$  mAb (A28240, 5  $\mu$ l/Test).