

# PE Rabbit anti-Human CD220 mAb

Catalog No.: A28239

## Basic Information

### Observed MW

### Calculated MW

156 kDa

### Category

Primary antibody

### Applications

FC

### Cross-Reactivity

Human

### CloneNo number

ARC77158

### Conjugate

PE. Ex:565nm. Em:574nm.

## Recommended Dilutions

FC 5  $\mu$ l per  $10^6$  cells in  
100  $\mu$ l volume

## Background

This gene encodes a member of the receptor tyrosine kinase family of proteins. The encoded preproprotein is proteolytically processed to generate alpha and beta subunits that form a heterotetrameric receptor. Binding of insulin or other ligands to this receptor activates the insulin signaling pathway, which regulates glucose uptake and release, as well as the synthesis and storage of carbohydrates, lipids and protein. Mutations in this gene underlie the inherited severe insulin resistance syndromes including type A insulin resistance syndrome, Donohue syndrome and Rabson-Mendenhall syndrome. Alternative splicing results in multiple transcript variants.

## Immunogen Information

### Gene ID

3643

### Swiss Prot

P06213

### Immunogen

Recombinant protein (or fragment). This information is considered to be commercially sensitive.

### Synonyms

HHF5; CD220

## Contact

 | 400-999-6126

 | [cn.market@abclonal.com.cn](mailto:cn.market@abclonal.com.cn)

 | [www.abclonal.com.cn](http://www.abclonal.com.cn)

## Product Information

### Source

Rabbit

### Isotype

IgG

### Purification

Affinity purification

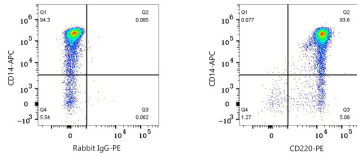
### Storage

Store at 2-8°C. Avoid freeze.

Buffer: PBS with 0.09% Sodium azide, 0.2% BSA, pH7.3.

## Validation Data

---



Flow cytometry:  $1 \times 10^6$  Human PBMC were surface-stained with APC Rabbit anti-Human/Monkey CD14 mAb (A25937,5  $\mu\text{l}/\text{Test}$ ) and PE Rabbit IgG isotype control (A24172,5  $\mu\text{l}/\text{Test}$ ,left) or PE Rabbit anti-Human CD220 mAb (A28239,5  $\mu\text{l}/\text{Test}$ ,right). Cells in the monocyte gate were used for analysis.