

PerCP/Cyanine5.5 Rabbit anti-Human/Monkey CD16 mAb

Catalog No.: A28235

Basic Information

Observed MW

Calculated MW
29KDa/26KDa

Category
Primary antibody

Applications
FC

Cross-Reactivity
Human, Cynomolgus

CloneNo number
ARC59985

Conjugate
PerCP-Cy5.5. Ex:482nm. Em:695nm.

Recommended Dilutions

FC 5 μ l per 10^6 cells in
100 μ l volume

Background

This gene encodes a receptor for the Fc portion of immunoglobulin G, and it is involved in the removal of antigen-antibody complexes from the circulation, as well as other responses, including antibody dependent cellular mediated cytotoxicity and antibody dependent enhancement of virus infections. This gene (FCGR3A) is highly similar to another nearby gene (FCGR3B) located on chromosome 1. The receptor encoded by this gene is expressed on natural killer (NK) cells as an integral membrane glycoprotein anchored through a transmembrane peptide, whereas FCGR3B is expressed on polymorphonuclear neutrophils (PMN) where the receptor is anchored through a phosphatidylinositol (PI) linkage. Mutations in this gene are associated with immunodeficiency 20, and have been linked to susceptibility to recurrent viral infections, susceptibility to systemic lupus erythematosus, and alloimmune neonatal neutropenia. Alternatively spliced transcript variants encoding different isoforms have been found for this gene.

Immunogen Information

Gene ID
2214/2215

Swiss Prot
P08637/O75015

Immunogen

Recombinant protein (or fragment). This information is considered to be commercially sensitive.

Synonyms

CD16; FCG3; CD16A; FCGR3; IGFR3; IMD20; FCR-10; FCRIII; CD16-II; FCGRIII; FCRIIIA; FcGRIIIA

Contact

☎ | 400-999-6126

✉ | cn.market@abclonal.com.cn

🌐 | www.abclonal.com.cn

Product Information

Source
Rabbit

Isotype
IgG

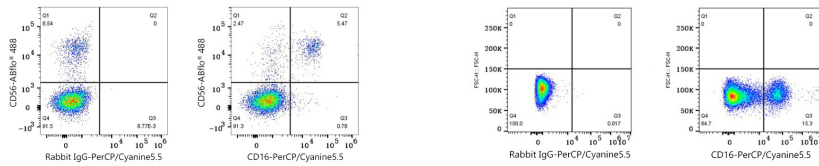
Purification
Affinity purification

Storage

Store at 2-8°C. Avoid freeze.

Buffer: PBS with 0.09% Sodium azide, 0.2% BSA, pH7.3.

Validation Data



Flow cytometry: 1×10^6 Human PBMC were surface-stained with ABflo® 488 Rabbit anti-Human/Monkey CD56/NCAM1 mAb (A26933, 5 μ l/Test) and PerCP/Cyanine5.5 Rabbit IgG isotype control (A25620, 5 μ l/Test, left) or PerCP/Cyanine5.5 Rabbit anti-Human/Monkey CD16 mAb (A28235, 5 μ l/Test, right). Cells in the lymphocyte gate were used for analysis.

Flow cytometry: 1×10^6 Cynomolgus peripheral blood mononuclear cells were surface-stained with PerCP/Cyanine5.5 Rabbit IgG isotype control (A25620, 5 μ l/Test, left) or PerCP/Cyanine5.5 Rabbit anti-Human/Monkey CD16 mAb (A28235, 5 μ l/Test, right). Cells in the lymphocyte gate were used for analysis.