

Podoplanin Rabbit mAb

Catalog No.: A28229 **Recombinant**

Basic Information

Observed MW

36 kDa

Calculated MW

18 kDa

Category

Primary antibody

Applications

WB,IF-P,IHC-P,ELISA

Cross-Reactivity

Mouse

CloneNo number

ARC74547

Background

Predicted to enable chemokine binding activity; protein-folding chaperone binding activity; and signaling receptor binding activity. Involved in several processes, including lymph node development; lymphatic endothelial cell fate commitment; and positive regulation of platelet aggregation. Acts upstream of or within several processes, including lung alveolus development; lymphangiogenesis; and prostaglandin metabolic process. Located in several cellular components, including external side of plasma membrane; lamellipodium; and ruffle. Is expressed in several structures, including brain; cardiovascular system; genitourinary system; hemolymphoid system; and respiratory system. Orthologous to human PDPN (podoplanin).

Recommended Dilutions

WB 1:10000 - 1:60000

IF-P 1:200 - 1:400

IHC-P 1:5000 - 1:20000

ELISA Recommended starting concentration is 1 µg/mL. Please optimize the concentration based on your specific assay requirements. For high-ratio antibody dilutions ($\geq 1:10000$) a sequential dilution method is strongly recommended to ensure measurement accuracy.

Immunogen Information

Gene ID

14726

Swiss Prot

Q62011

Immunogen

Recombinant protein (or fragment). This information is considered to be commercially sensitive.

Synonyms

E11; T1a; Gp38; OTS-8; T1alpha; RANDAM-2; T1-alpha

Product Information

Source

Rabbit

Isotype

IgG

Purification

Affinity purification

Storage

Store at -20°C. Avoid freeze / thaw cycles.

Buffer: PBS containing 50% glycerol and 0.05% BSA, preserved with proclin300 or sodium azide (as specified on the Certificate of Analysis), pH 7.3.

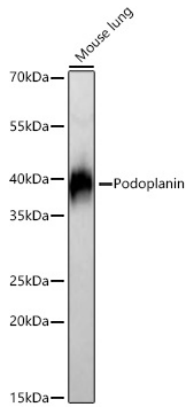
Contact

 | 400-999-6126

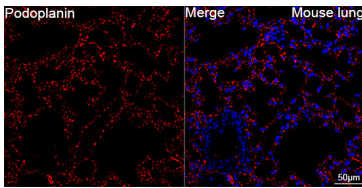
 | cn.market@abclonal.com.cn

 | www.abclonal.com.cn

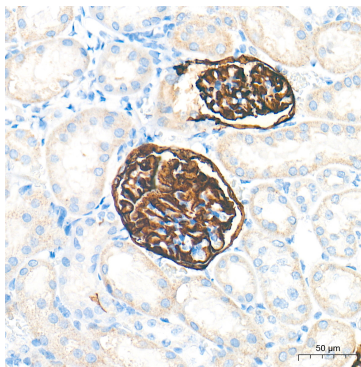
Validation Data



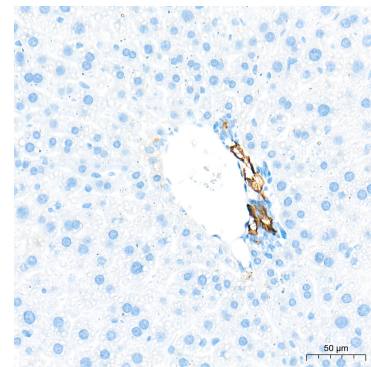
Western blot analysis of lysates from Mouse lung using Podoplanin Rabbit mAb (A28229) at 1:30000 dilution incubated at room temperature for 1.5 hours.
 Secondary antibody: HRP-conjugated Goat anti-Rabbit IgG (H+L) (AS014) at 1:10000 dilution.
 Lysates/proteins: 25 µg per lane.
 Blocking buffer: 3% nonfat dry milk in TBST.
 Detection: ECL Basic Kit (RM00020).
 Exposure time: 20 s.



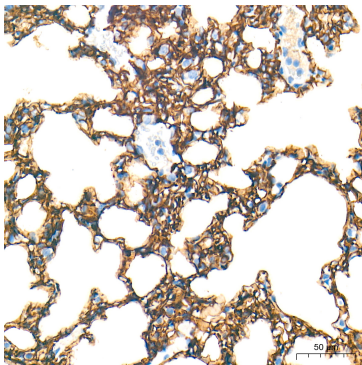
Confocal imaging of paraffin-embedded Mouse lung tissue using Podoplanin Rabbit mAb (A28229, dilution 1:200) followed by a further incubation with Cy3-conjugated Goat Anti-Rabbit IgG (H+L) (AS007, dilution 1:500) (Red). DAPI was used for nuclear staining (Blue). High pressure antigen retrieval performed with 0.01M Citrate Buffer (pH 6.0) prior to IF staining. Objective: 40x.



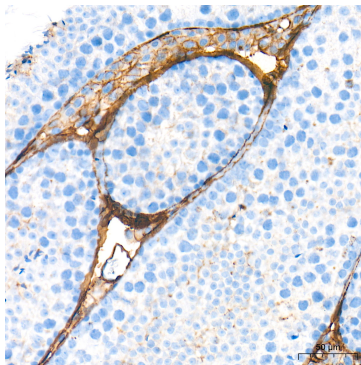
Immunohistochemistry analysis of paraffin-embedded Mouse kidney tissue using Podoplanin Rabbit mAb (A28229) at a dilution of 1:6000 (40x lens). High pressure antigen retrieval performed with 0.01M Tris-EDTA Buffer (pH 9.0) prior to IHC staining.



Immunohistochemistry analysis of paraffin-embedded Mouse liver tissue using Podoplanin Rabbit mAb (A28229) at a dilution of 1:6000 (40x lens). High pressure antigen retrieval performed with 0.01M Tris-EDTA Buffer (pH 9.0) prior to IHC staining.



Immunohistochemistry analysis of paraffin-embedded Mouse lung tissue using Podoplanin Rabbit mAb (A28229) at a dilution of 1:6000 (40x lens). High pressure antigen retrieval performed with 0.01M Tris-EDTA Buffer (pH 9.0) prior to IHC staining.



Immunohistochemistry analysis of paraffin-embedded Mouse testis tissue using Podoplanin Rabbit mAb (A28229) at a dilution of 1:6000 (40x lens). High pressure antigen retrieval performed with 0.01M Tris-EDTA Buffer (pH 9.0) prior to IHC staining.