

ABflo® 647 Rabbit anti-Mouse T-bet/Tbx21 mAb

Catalog No.: A28216

Basic Information

Observed MW

Calculated MW

58 kDa

Category

Primary antibody

Applications

FC (intra)

Cross-Reactivity

Mouse

CloneNo number

ARC74215

Conjugate

ABflo® 647. Ex:648nm. Em:664nm.

Recommended Dilutions

FC (intra) ≤0.25 µg per million cells
in 100 µl volume

Background

Enables DNA binding activity and DNA-binding transcription activator activity, RNA polymerase II-specific. Involved in several processes, including T-helper 1 cell lineage commitment; negative regulation of T-helper 17 cell lineage commitment; and regulation of gene expression. Acts upstream of or within T cell differentiation and positive regulation of isotype switching to IgG isotypes. Located in neuronal cell body and nucleus. Is expressed in several structures, including central nervous system; colon; genitourinary system; sensory organ; and thymus. Used to study asthma. Human ortholog(s) of this gene implicated in asthma, nasal polyps, and aspirin intolerance and immunodeficiency 88. Orthologous to human TBX21 (T-box transcription factor 21).

Immunogen Information

Gene ID

57765

Swiss Prot

Q9JKD8

Immunogen

Recombinant protein (or fragment). This information is considered to be commercially sensitive.

Synonyms

TBT1; Tbet; Tblym

Contact

☎ | 400-999-6126

✉ | cn.market@abclonal.com.cn

🌐 | www.abclonal.com.cn

Product Information

Source

Rabbit

Isotype

IgG

Purification

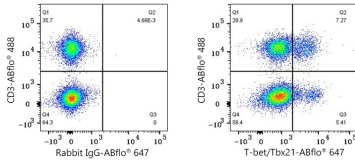
Affinity purification

Storage

Store at 2-8°C. Avoid freeze.

Buffer: PBS with 0.09% Sodium azide, 0.2% BSA, pH7.3.

Validation Data



Flow cytometry: 1×10^6 C57BL/6 mouse splenocytes were intracellularly-stained with ABflo® 488 Rat anti-Mouse CD3 mAb (A27161, 5 μ l/Test) and ABflo® 647 Rabbit IgG isotype control (A22070, 5 μ l/Test, left) or ABflo® 647 Rabbit anti-Mouse T-bet/Tbx21 mAb (A28216, 0.25 μ g, right).