

ABflo® 610 Rabbit anti-Mouse Ly-6G mAb

Catalog No.: A28201

Basic Information

Observed MW

Calculated MW
28kDa

Category
Primary antibody

Applications
FC

Cross-Reactivity
Mouse

CloneNo number
ARC75413

Conjugate
ABflo® 610. Ex:421nm. Em:612nm.

Background

Located in external side of plasma membrane.

Recommended Dilutions

FC ≤0.25 µg per million cells
in 100 µl volume

Immunogen Information

Gene ID	Swiss Prot
546644	P35461

Immunogen

Recombinant protein (or fragment). This information is considered to be commercially sensitive.

Synonyms

Gr1; Gr-1; Ly-6G

Contact

☎		400-999-6126
✉		cn.market@abclonal.com.cn
🌐		www.abclonal.com.cn

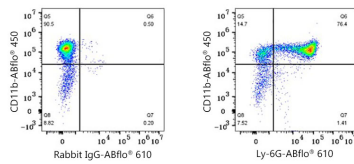
Product Information

Source	Isotype	Purification
Rabbit	IgG	Affinity purification

Storage

Store at 2-8°C. Avoid freeze.
Buffer: PBS with 0.09% Sodium azide, 0.2% BSA, pH7.3.

Validation Data



Flow cytometry: 1X10⁶ C57BL/6 mouse bone marrow cells were surface-stained with ABflo® 450 Rabbit anti-Mouse CD11b mAb (A26229, 5 µl/Test) and ABflo® 610 Rabbit IgG isotype control (5 µl/Test, left) or ABflo® 610 Rabbit anti-Mouse Ly-6G mAb (A28201, 0.25 µg, right).