

[KO Validated] TIFA Rabbit mAb

Catalog No.: A28185

KO Validated

Recombinant

Basic Information

Observed MW

20 kDa

Calculated MW

22 kDa

Category

Primary antibody

Applications

WB, IHC-P, ELISA

Cross-Reactivity

Mouse

CloneNo number

ARC76049

Background

This gene encodes an adapter protein involved in adaptive and innate immunity. This protein includes a forkhead-associated (FHA) domain that specifically binds to phosphorylated serine and threonine residues. In response to bacterial infection, the encoded host cell protein undergoes an intermolecular interaction between the FHA domain and a phosphorylated threonine that leads to protein oligomerization and stimulation of the NF-kappa B and other downstream signaling pathways. This protein exhibits reduced expression in hepatocellular carcinoma and may suppress hepatocellular carcinoma progression. This protein may also play a role in the DNA damage response.

Recommended Dilutions

WB 1:5000 - 1:20000**IHC-P** 1:200 - 1:800

ELISA Recommended starting concentration is 1 µg/mL. Please optimize the concentration based on your specific assay requirements. For high-ratio antibody dilutions ($\geq 1:10000$) a sequential dilution method is strongly recommended to ensure measurement accuracy.

Immunogen Information

Gene ID

211550

Swiss Prot

Q79318

Immunogen

Synthetic peptide. This information is considered to be commercially sensitive.

Synonyms

T2bp

Product Information

Source

Rabbit

Isotype

IgG

Purification

Affinity purification

Storage

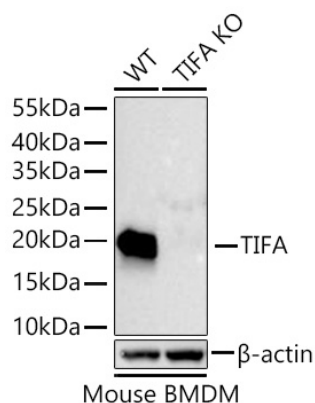
Store at -20°C. Avoid freeze / thaw cycles.

Buffer: PBS with 0.09% Sodium azide, 0.05% BSA, 50% glycerol, pH7.3.

Contact

 | 400-999-6126 | cn.market@abclonal.com.cn | www.abclonal.com.cn

Validation Data



Western blot analysis of lysates from wild type (WT) and TIFA knockout (KO) Mouse BMDM cells using [KO Validated] TIFA Rabbit mAb (A28185) at 1:5000 dilution incubated overnight at 4°C.

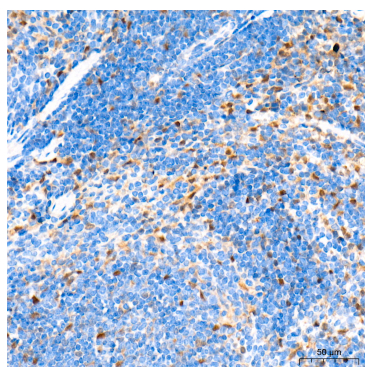
Secondary antibody: HRP-conjugated Goat anti-Rabbit IgG (H+L) (AS014) at 1:10000 dilution.

Lysates/proteins: 25 μ g per lane.

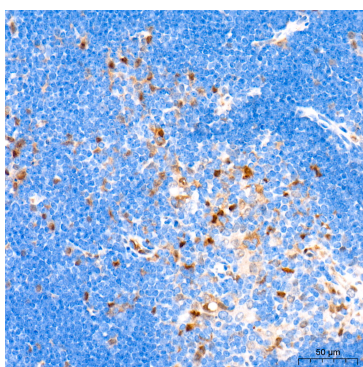
Blocking buffer: 3% nonfat dry milk in TBST.

Detection: ECL Basic Kit (RM00020).

Exposure time: 20 s.



Immunohistochemistry analysis of paraffin-embedded Mouse spleen tissue using [KO Validated] TIFA Rabbit mAb (A28185) at a dilution of 1:500 (40x lens). High pressure antigen retrieval performed with 0.01M Tris-EDTA Buffer (pH 9.0) prior to IHC staining.



Immunohistochemistry analysis of paraffin-embedded Mouse thymus tissue using [KO Validated] TIFA Rabbit mAb (A28185) at a dilution of 1:500 (40x lens). High pressure antigen retrieval performed with 0.01M Tris-EDTA Buffer (pH 9.0) prior to IHC staining.