

PE Rabbit anti-Human/Monkey IgD mAb

Catalog No.: A28183

Basic Information

Observed MW

Calculated MW

47kDa

Category

Primary antibody

Applications

FC

Cross-Reactivity

Human, Rhesus

CloneNo number

ARC60051

Conjugate

PE. Ex:565nm. Em:574nm.

Background

IgD is the major antigen receptor isotype on the surface of most peripheral B-cells, where it is coexpressed with IgM. The membrane-bound IgD (mIgD) induces the phosphorylation of CD79A and CD79B by the Src family of protein tyrosine kinases.

Recommended Dilutions

FC 5 μ l per 10^6 cells in
100 μ l volume

Immunogen Information

Gene ID

3495

Swiss Prot

P01880

Immunogen

Recombinant protein (or fragment). This information is considered to be commercially sensitive.

Synonyms

IGHD

Contact

 | 400-999-6126

 | cn.market@abclonal.com.cn

 | www.abclonal.com.cn

Product Information

Source

Rabbit

Isotype

IgG

Purification

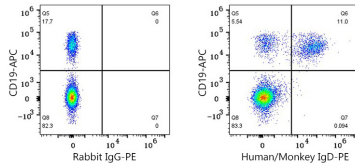
Affinity purification

Storage

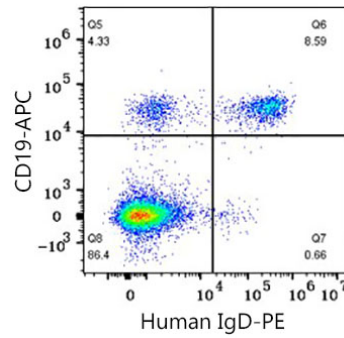
Store at 2-8°C. Avoid freeze.

Buffer: PBS with 0.09% Sodium azide, 0.2% BSA, pH7.3.

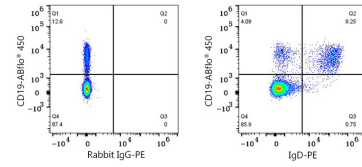
Validation Data



Flow cytometry: 1×10^6 Cynomolgus PBMC were surface-stained with APC Rabbit anti-Human/Monkey CD19 mAb (A26220, 5 $\mu\text{l}/\text{Test}$) and PE Rabbit IgG isotype control (A24172, 5 $\mu\text{l}/\text{Test}$, left) or PE Rabbit anti-Human/Monkey IgD mAb (A28183, 5 $\mu\text{l}/\text{Test}$, right). Cells in the lymphocyte gate were used for analysis.



Flow cytometry: 1×10^6 Human PBMC were surface-stained with APC Rabbit anti-Human/Monkey CD19 mAb (A26220, 5 $\mu\text{l}/\text{Test}$) and PE Rabbit anti-Human/Monkey IgD mAb (A28183, 5 $\mu\text{l}/\text{Test}$). Cells in the lymphocyte gate were used for analysis.



Flow cytometry: 1×10^6 Rhesus PBMC were surface-stained with ABflo® 488 Mouse anti-Human CD11b mAb (A28074, 5 $\mu\text{l}/\text{Test}$), ABflo® 450 Rabbit anti-Human/Monkey CD19 mAb (A27286, 5 $\mu\text{l}/\text{Test}$) and PE Rabbit IgG isotype control (A24172, 5 $\mu\text{l}/\text{Test}$, left) or PE Rabbit anti-Human/Monkey IgD mAb (A28183, 5 $\mu\text{l}/\text{Test}$, right). Cells in the CD11b-gate were used for analysis.