

# PE Rabbit anti-Human IgG (Fc) mAb

Catalog No.: A28177

## Basic Information

### Observed MW

### Calculated MW

36 kDa

### Category

Primary antibody

### Applications

FC

### Cross-Reactivity

Human

### CloneNo number

ARC53383

### Conjugate

PE. Ex:565nm. Em:574nm.

## Background

Predicted to enable antigen binding activity and immunoglobulin receptor binding activity. Predicted to be involved in several processes, including activation of immune response; defense response to other organism; and phagocytosis. Predicted to act upstream of or within several processes, including immunoglobulin mediated immune response; positive regulation of hypersensitivity; and positive regulation of phagocytosis. Located in extracellular space.

## Recommended Dilutions

FC                    ≤0.25 µg per million cells  
                         in 100 µl volume

## Immunogen Information

### Gene ID

3500

### Swiss Prot

P01857

### Immunogen

Recombinant protein (or fragment). This information is considered to be commercially sensitive.

### Synonyms

IGHG1

## Contact

☎ | 400-999-6126

✉ | [cn.market@abclonal.com.cn](mailto:cn.market@abclonal.com.cn)

🌐 | [www.abclonal.com.cn](http://www.abclonal.com.cn)

## Product Information

### Source

Rabbit

### Isotype

IgG

### Purification

Affinity purification

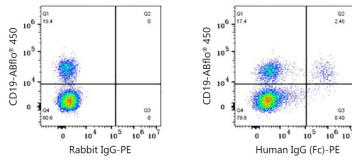
### Storage

Store at 2-8°C. Avoid freeze.

Buffer: PBS with 0.09% Sodium azide, 0.2% BSA, pH7.3.

## Validation Data

---



Flow cytometry:  $1 \times 10^6$  Human PBMC were surface-stained with ABflo® 450 Rabbit anti-Human/Monkey CD19 mAb (A27286, 5  $\mu$ l/Test) and PE Rabbit IgG isotype control (A24172, 5  $\mu$ l/Test, left) or PE Rabbit anti-Human IgG(Fc) mAb (A28177, 0.25  $\mu$ g, right). Cells in the lymphocyte gate were used for analysis.