

APC Rabbit anti-Mouse F4/80 mAb

Catalog No.: A28171

Basic Information

Observed MW

Calculated MW

102 kDa

Category

Primary antibody

Applications

FC

Cross-Reactivity

Mouse

CloneNo number

ARC74998

Conjugate

APC. Ex:650nm. Em:660nm.

Background

Predicted to enable G protein-coupled receptor activity. Predicted to be involved in adenylate cyclase-activating G protein-coupled receptor signaling pathway. Predicted to act upstream of or within G protein-coupled receptor signaling pathway and adaptive immune response. Located in external side of plasma membrane. Is expressed in several structures, including cardiovascular system; central nervous system; genitourinary system; hemolymphoid system; and intestine. Orthologous to human ADGRE1 (adhesion G protein-coupled receptor E1).

Recommended Dilutions

FC ≤0.25 µg per million cells
 in 100 µl volume

Immunogen Information

Gene ID

13733

Swiss Prot

Q61549

Immunogen

Recombinant protein (or fragment). This information is considered to be commercially sensitive.

Synonyms

Emr1; Ly71; F4/80; Gpf480; TM7LN3; DD7A5-7; EGF-TM7

Contact

☎ | 400-999-6126

✉ | cn.market@abclonal.com.cn

🌐 | www.abclonal.com.cn

Product Information

Source

Rabbit

Isotype

IgG

Purification

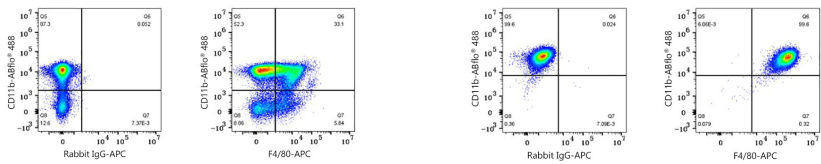
Affinity purification

Storage

Store at 2-8°C. Avoid freeze.

Buffer: PBS with 0.09% Sodium azide, 0.2% BSA, pH7.3.

Validation Data



Flow cytometry: 1X10⁶ C57BL/6 mouse bone marrow cells were surface-stained with ABflo® 488 Rabbit anti-Mouse CD11b mAb (A24094,5 µl/Test) and APC Rabbit IgG isotype control (A24173,5 µl/Test,left) or APC Rabbit anti-Mouse F4/80 mAb (A28171,0.25 µg,right).

Flow cytometry: 1X10⁶ C57BL/6 Mouse Bone Marrow-Derived M0 Macrophages cells were surface-stained with ABflo® 488 Rabbit anti-Mouse CD11b mAb (A24094,5 µl/Test) and APC Rabbit IgG isotype control (A24173,5 µl/Test,left) or APC Rabbit anti-Mouse F4/80 mAb (A28171,0.25 µg,right).