

# PE Rabbit anti-Chicken CD25 mAb

Catalog No.: A28169

## Basic Information

### Observed MW

### Calculated MW

24 kDa

### Category

Primary antibody

### Applications

FC

### Cross-Reactivity

Chicken

### CloneNo number

ARC76489

### Conjugate

PE. Ex:565nm. Em:574nm.

## Background

CD25 is the  $\alpha$  chain of the heterotrimeric IL-2 receptor and is highly expressed in many types of hematologic malignancies but shows low expression in most solid tumors. CD25 is also abundantly expressed on activated circulating immune cells and regulatory T cells (Tregs). The infiltration of Tregs into the tumor microenvironment can lead to an imbalance in the ratio of effector T cells (Teffs) to Tregs, which is associated with tumor progression. Restoring a balanced Teff/Treg ratio may enhance the efficacy of immunotherapy. As a potential target for Treg depletion, CD25 plays a critical role in the development of novel immunotherapeutic strategies.

## Recommended Dilutions

FC  $\leq 0.5 \mu\text{g}$  per million cells  
in 100  $\mu\text{l}$  volume

## Immunogen Information

### Gene ID

395294

### Swiss Prot

Q90WJ4

### Immunogen

Recombinant protein (or fragment). This information is considered to be commercially sensitive.

### Synonyms

CD25; IL2r; Ly-43; p55; CD25; IL2R; IMD41; TCGFR; IDDM10

## Contact

☎ | 400-999-6126

✉ | [cn.market@abclonal.com.cn](mailto:cn.market@abclonal.com.cn)

🌐 | [www.abclonal.com.cn](http://www.abclonal.com.cn)

## Product Information

### Source

Rabbit

### Isotype

IgG

### Purification

Affinity purification

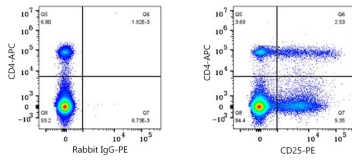
### Storage

Store at 2-8°C. Avoid freeze.

Buffer: PBS with 0.09% Sodium azide, 0.2% BSA, pH7.3.

## Validation Data

---



Flow cytometry:  $1 \times 10^6$  Chicken PBMC were surface-stained with APC Rabbit anti-Chicken CD4 mAb (5  $\mu$ l/Test) and PE Rabbit IgG isotype control (A24172, 5  $\mu$ l/Test, left) or PE Rabbit anti-Chicken CD25 mAb (A28169, 0.5  $\mu$ g, right).