

MTCO2 Rabbit mAb

Catalog No.: A28143 **Recombinant**

Basic Information

Observed MW

21-25 kDa

Calculated MW

26 kDa

Category

Primary antibody

Applications

WB,IF/ICC,IHC-P,ELISA

Cross-Reactivity

Human, Mouse, Rat

CloneNo number

ARC75611

Background

Predicted to enable copper ion binding activity and oxidoreductase activity. Predicted to contribute to cytochrome-c oxidase activity. Predicted to be involved in ATP synthesis coupled electron transport; positive regulation of cellular biosynthetic process; and positive regulation of necrotic cell death. Located in mitochondrion. Is expressed in embryo; epiblast; heart; liver; and metanephros. Orthologous to several human genes including MTCO2P12 (MT-CO2 pseudogene 12).

Recommended Dilutions

WB 1:10000 - 1:50000

IF/ICC 1:200 - 1:2000

IHC-P 1:400 - 1:1600

ELISA Recommended starting concentration is 1 µg/mL. Please optimize the concentration based on your specific assay requirements. For high-ratio antibody dilutions (≥1:10000) a sequential dilution method is strongly recommended to ensure measurement accuracy.

Immunogen Information

Gene ID

17709

Swiss Prot

P00403

Immunogen

Synthetic peptide. This information is considered to be commercially sensitive.

Synonyms

COX2

Product Information

Source

Rabbit

Isotype

IgG

Purification

Affinity purification

Storage

Store at -20°C. Avoid freeze / thaw cycles.

Buffer: PBS with 0.09% Sodium azide, 0.05% BSA, 50% glycerol, pH7.3.

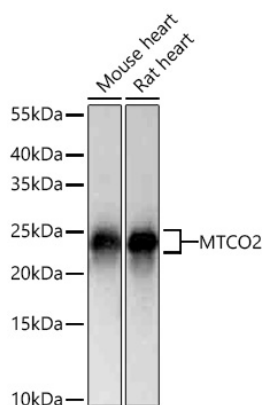
Contact

☎ | 400-999-6126

✉ | cn.market@abclonal.com.cn

🌐 | www.abclonal.com.cn

Validation Data



Western blot analysis of various lysates using MTCO2 Rabbit mAb (A28143) at 1:11000 dilution incubated overnight at 4°C.

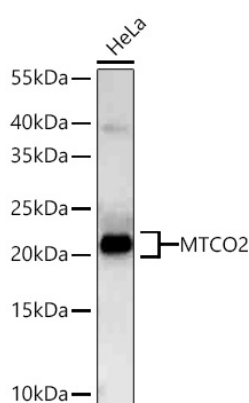
Secondary antibody: HRP-conjugated Goat anti-Rabbit IgG (H+L) (AS014) at 1:10000 dilution.

Lysates/proteins: 25 µg per lane.

Blocking buffer: 3% nonfat dry milk in TBST.

Detection: ECL Basic Kit (RM00020).

Exposure time: 1s.



Western blot analysis of lysates from HeLa cells using MTCO2 Rabbit mAb (A28143) at 1:11000 dilution incubated overnight at 4°C.

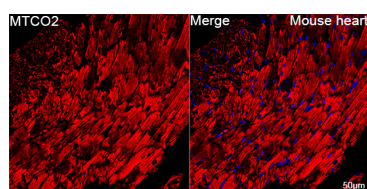
Secondary antibody: HRP-conjugated Goat anti-Rabbit IgG (H+L) (AS014) at 1:10000 dilution.

Lysates/proteins: 25 µg per lane.

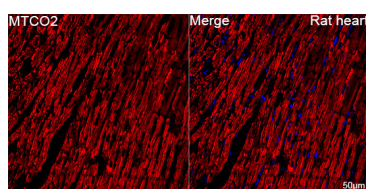
Blocking buffer: 3% nonfat dry milk in TBST.

Detection: ECL Basic Kit (RM00020).

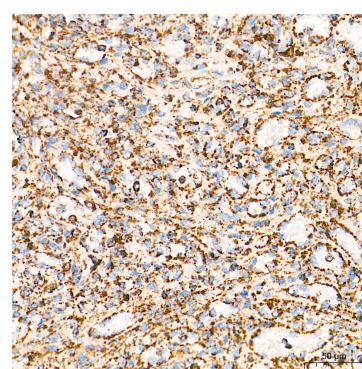
Exposure time: 10s.



Confocal imaging of paraffin-embedded Mouse heart tissue using MTCO2 Rabbit mAb (A28143, dilution 1:200) followed by a further incubation with Cy3 Goat Anti-Rabbit IgG (H+L) (AS007, dilution 1:500) (Red). DAPI was used for nuclear staining (Blue). High pressure antigen retrieval performed with 0.01M Citrate Buffer (pH 6.0) prior to IF staining. Objective: 40x.

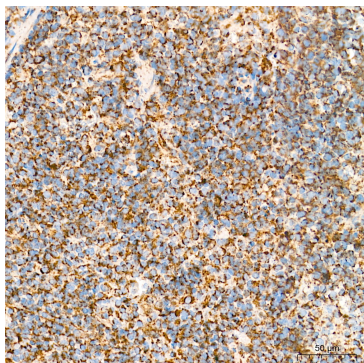


Confocal imaging of paraffin-embedded Rat heart tissue using MTCO2 Rabbit mAb (A28143, dilution 1:200) followed by a further incubation with Cy3 Goat Anti-Rabbit IgG (H+L) (AS007, dilution 1:500) (Red). DAPI was used for nuclear staining (Blue). High pressure antigen retrieval performed with 0.01M Citrate Buffer (pH 6.0) prior to IF staining. Objective: 40x.

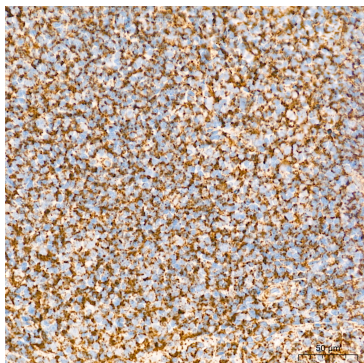


Immunohistochemistry analysis of paraffin-embedded Human spleen tissue using MTCO2 Rabbit mAb (A28143) at a dilution of 1:500 (40x lens). High pressure antigen retrieval performed with 0.01M Tris-EDTA Buffer (pH 9.0) prior to IHC staining.

Validation Data



Immunohistochemistry analysis of paraffin-embedded Mouse spleen tissue using MTCO2 Rabbit mAb (A28143) at a dilution of 1:500 (40x lens). High pressure antigen retrieval performed with 0.01M Tris-EDTA Buffer (pH 9.0) prior to IHC staining.



Immunohistochemistry analysis of paraffin-embedded Rat spleen tissue using MTCO2 Rabbit mAb (A28143) at a dilution of 1:500 (40x lens). High pressure antigen retrieval performed with 0.01M Tris-EDTA Buffer (pH 9.0) prior to IHC staining.