

PE Rabbit anti-Human CD282/TLR2 mAb

Catalog No.: A28123

Basic Information

Observed MW**Calculated MW**

90kDa

Category

Primary antibody

Applications

FC

Cross-Reactivity

Human

Conjugate

PE. Ex:565nm. Em:574nm.

Background

The protein encoded by this gene is a member of the Toll-like receptor (TLR) family which plays a fundamental role in pathogen recognition and activation of innate immunity. TLRs are highly conserved from Drosophila to humans and share structural and functional similarities. This protein is a cell-surface protein that can form heterodimers with other TLR family members to recognize conserved molecules derived from microorganisms known as pathogen-associated molecular patterns (PAMPs). Activation of TLRs by PAMPs leads to an up-regulation of signaling pathways to modulate the host's inflammatory response. This gene is also thought to promote apoptosis in response to bacterial lipoproteins. This gene has been implicated in the pathogenesis of several autoimmune diseases. Alternative splicing results in multiple transcript variants.

Recommended Dilutions

FC 5 µl per 10⁶ cells in
100 µl volume

Immunogen Information

Gene ID

7097

Swiss Prot

O60603

Immunogen

Synthetic peptide. This information is considered to be commercially sensitive.

Synonyms

TIL4; CD282

Contact

 | 400-999-6126 | cn.market@abclonal.com.cn | www.abclonal.com.cn

Product Information

Source

Rabbit

Isotype

IgG

Purification

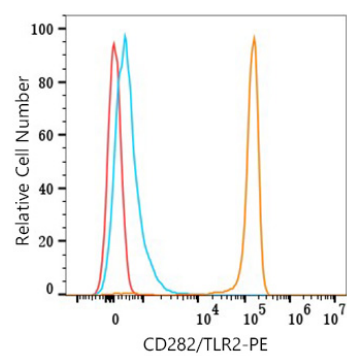
Affinity purification

Storage

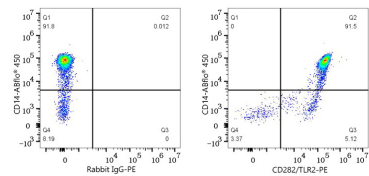
Store at 2-8°C. Avoid freeze.

Buffer: PBS with 0.09% Sodium azide, 0.2% BSA, pH7.3.

Validation Data



Flow cytometry: 1X10⁶ Human PBMC were surface-stained with PE Rabbit anti-Human CD282/TLR2 mAb (A28123,5 µl/Test,orange line) or PE Rabbit IgG isotype control (A24172,5 µl/Test,blue line). Non-fluorescently stained cells were used as blank control (red line).



Flow cytometry:1X10⁶ Human PBMC were surface-stained with ABflo® 450 Rabbit anti-Human CD14 mAb (A25196,5 µl/Test) and PE Rabbit IgG isotype control (A24172,5 µl/Test,left) or PE Rabbit anti-Human CD282/TLR2 mAb (A28123,5 µl/Test,right).