

# ABflo® 647 Rabbit anti-Rat CD8a mAb

Catalog No.: A28120

## Basic Information

### Observed MW

### Calculated MW

32kd

### Category

Primary antibody

### Applications

FC

### Cross-Reactivity

Rat

### CloneNo number

ARC77030

### Conjugate

ABflo® 647. Ex:648nm. Em:664nm.

## Background

CD8a, a 32 kDa glycoprotein also known as T8, Lyt2, Ly-2, and CD8 $\alpha$ , is a member of the immunoglobulin superfamily. It is expressed on most thymocytes, subsets of mature T cells, the majority of NK cells, macrophages, and some activated (non-resting) CD4+ T cells. CD8a forms a heterodimer with the CD8 $\beta$  chain (CD8b) on the surface of most thymocytes. In contrast, mature peripheral T lymphocytes predominantly express the CD8  $\alpha\beta$  heterodimer. Intestinal intraepithelial lymphocytes express CD8a but lack CD8b expression. CD8 functions as an antigen co-receptor on T cells, interacting with Major Histocompatibility Complex (MHC) class I molecules on antigen-presenting cells or epithelial cells. CD8 participates in T cell activation by associating with the T cell receptor (TCR) complex and the protein tyrosine kinase lck (p56lck).

## Recommended Dilutions

FC  $\leq 0.125$   $\mu$ g per million cells in 100  $\mu$ l volume

## Immunogen Information

### Gene ID

24930

### Swiss Prot

P07725

### Immunogen

Recombinant protein (or fragment). This information is considered to be commercially sensitive.

### Synonyms

T8; Lyt2; Ly-2; CD8 $\alpha$

## Contact

☎ | 400-999-6126

✉ | [cn.market@abclonal.com.cn](mailto:cn.market@abclonal.com.cn)

🌐 | [www.abclonal.com.cn](http://www.abclonal.com.cn)

## Product Information

### Source

Rabbit

### Isotype

IgG

### Purification

Affinity purification

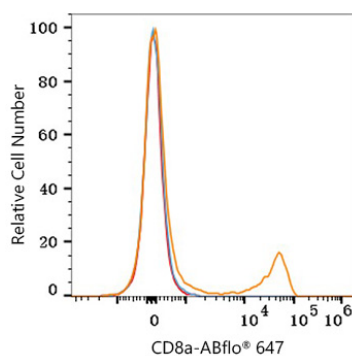
### Storage

Store at 2-8°C. Avoid freeze.

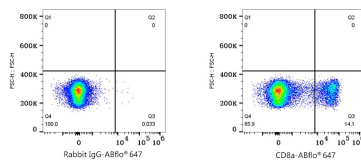
Buffer: PBS with 0.09% Sodium azide, 0.2% BSA, pH7.3.



## Validation Data



Flow cytometry:  $1 \times 10^6$  Rat splenocytes were surface-stained with ABflo® 647 Rabbit anti-Rat CD8a mAb (A28120, 0.125  $\mu$ g, orange line) or ABflo® 647 Rabbit IgG isotype control (A22070, 5  $\mu$ l/Test, blue line). Non-fluorescently stained cells were used as blank control (red line).



Flow cytometry:  $1 \times 10^6$  Rat splenocytes were surface-stained with ABflo® 647 Rabbit IgG isotype control (A22070, 5  $\mu$ l/Test, left) or ABflo® 647 Rabbit anti-Rat CD8a mAb (A28120, 0.125  $\mu$ g, right).