

PE Mouse anti-Human/Monkey CD11b mAb

Catalog No.: A28070

Basic Information

Observed MW

Calculated MW

127kDa

Category

Primary antibody

Applications

FC

Cross-Reactivity

Human, Cynomolgus

CloneNo number

AMC10008R

Conjugate

PE. Ex:565nm. Em:574nm.

Background

This gene encodes the integrin alpha M chain. Integrins are heterodimeric integral membrane proteins composed of an alpha chain and a beta chain. This I-domain containing alpha integrin combines with the beta 2 chain (ITGB2) to form a leukocyte-specific integrin referred to as macrophage receptor 1 ('Mac-1'), or inactivated-C3b (iC3b) receptor 3 ('CR3'). The alpha M beta 2 integrin is important in the adherence of neutrophils and monocytes to stimulated endothelium, and also in the phagocytosis of complement coated particles. Multiple transcript variants encoding different isoforms have been found for this gene.

Recommended Dilutions

FC 5 μ l per 10^6 cells in
100 μ l volume

Immunogen Information

Gene ID

Hu 3684 Cyon 101866035

Swiss Prot

P11215

Immunogen

Synthetic peptide. This information is considered to be commercially sensitive.

Synonyms

CR3A; MO1A; CD11B; MAC-1; MAC1A; SLEB6

Contact

☎ | 400-999-6126

✉ | cn.market@abclonal.com.cn

🌐 | www.abclonal.com.cn

Product Information

Source

Mouse

Isotype

IgG1, κ

Purification

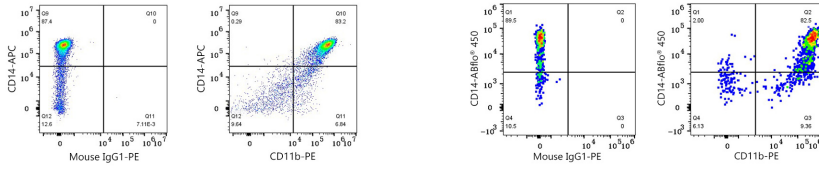
Affinity purification

Storage

Store at 2-8°C. Avoid freeze.

Buffer: PBS with 0.09% Sodium azide, 0.2% BSA, pH7.3.

Validation Data



Flow cytometry: 1X10⁶ Human PBMC were surface-stained with APC Rabbit anti-Human CD14 mAb (A25937, 5 µl/Test) and PE Mouse IgG1 isotype control (A22878, 5 µl/Test, left) or PE Mouse anti-Human CD11b mAb (A28070, 5 µl/Test, right). Cells in the monocyte gate were used for analysis.

Flow cytometry: 1X10⁶ Cynomolgus peripheral blood mononuclear cells were surface-stained with ABflo® 450 Rabbit anti-Human/Monkey CD14 mAb (A25196, 5 µl/Test) and PE Mouse IgG1 isotype control (A22878, 5 µl/Test, left) or PE Mouse anti-Human/Monkey CD11b mAb (A28070, 5 µl/Test, right). Cells in the monocyte gate were used for analysis.