

TNF-alpha Rabbit mAb

Catalog No.: A28059 **Recombinant**

Basic Information

Observed MW

25 kDa/28 kDa

Calculated MW

26 kDa

Category

Primary antibody

Applications

WB,IF/ICC,ELISA

Cross-Reactivity

Mouse

CloneNo number

ARC54422

Recommended Dilutions

WB 1:1000 - 1:10000**IF/ICC** 1:1000 - 1:4000

ELISA Recommended starting concentration is 1 µg/mL. Please optimize the concentration based on your specific assay requirements. For high-ratio antibody dilutions ($\geq 1:10000$) a sequential dilution method is strongly recommended to ensure measurement accuracy.

Contact

 | 400-999-6126 | cn.market@abclonal.com.cn | www.abclonal.com.cn

Background

This gene encodes a multifunctional proinflammatory cytokine that belongs to the tumor necrosis factor (TNF) superfamily. Members of this family are classified based on primary sequence, function, and structure. This protein is synthesized as a type-II transmembrane protein and is reported to be cleaved into products that exert distinct biological functions. It plays an important role in the innate immune response as well as regulating homeostasis but is also implicated in diseases of chronic inflammation. In mouse deficiency of this gene is associated with defects in response to bacterial infection, with defects in forming organized follicular dendritic cell networks and germinal centers, and with a lack of primary B cell follicles. Alternative splicing results in multiple transcript variants.

Immunogen Information

Gene ID

21926

Swiss Prot

P06804

Immunogen

Recombinant protein (or fragment). This information is considered to be commercially sensitive.

Synonyms

DIF; Tnfa; TNF-a; TNFSF2; Tnlg1f; Tnfsf1a; TNFalpha; TNF-alpha

Product Information

Source

Rabbit

Isotype

IgG

Purification

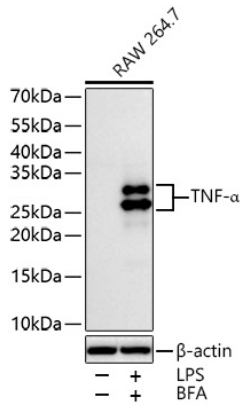
Affinity purification

Storage

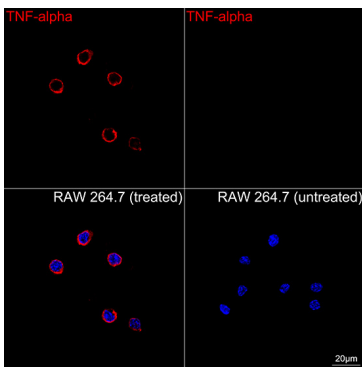
Store at -20°C. Avoid freeze / thaw cycles.

Buffer: PBS with 0.09% Sodium azide, 0.05% BSA, 50% glycerol, pH7.3.

Validation Data



Western blot analysis of lysates from RAW 264.7 cells using TNF-alpha Rabbit mAb (A28059) at 1:10000 dilution incubated overnight at 4°C. RAW 264.7 cells were treated with LPS (100 ng/mL) at 37°C for 6 hours and BFA (300 ng/mL) at 37°C for 3 hours after serum starvation overnight. Secondary antibody: HRP-conjugated Goat anti-Rabbit IgG (H+L) (AS014) at 1:10000 dilution. Lysates/proteins: 30 μ g per lane. Blocking buffer: 3% nonfat dry milk in TBST. Detection: ECL Basic Kit (RM00020). Exposure time: 90 s.



Confocal imaging of RAW 264.7 cells (treated with LPS and BFA) and RAW 264.7 cells (untreated) using TNF-alpha Rabbit mAb (A28059, dilution 1:1700) followed by a further incubation with Cy3-conjugated Goat Anti-Rabbit IgG (H+L) (AS007, dilution 1:500) (Red). DAPI was used for nuclear staining (Blue). Objective: 100x.