

# ABflo® 488 Rabbit anti-Mouse CD82 mAb

Catalog No.: A28045

## Basic Information

### Observed MW

**Calculated MW**  
30kDa

**Category**  
Primary antibody

**Applications**  
FC

**Cross-Reactivity**  
Mouse

**CloneNo number**  
ARC75826

**Conjugate**  
ABflo® 488. Ex:491nm. Em:516nm.

## Background

Predicted to be located in plasma membrane. Predicted to be integral component of plasma membrane. Is expressed in several structures, including choroid plexus; foregut; limb segment; meninges; and olfactory epithelium. Orthologous to human CD82 (CD82 molecule).

## Recommended Dilutions

**FC** ≤0.5 µg per million cells  
in 100 µl volume

## Immunogen Information

Gene ID	Swiss Prot
12521	P40237

### Immunogen

Recombinant protein (or fragment). This information is considered to be commercially sensitive.

### Synonyms

C33; IA4; Kai1; Tspan27

## Contact

☎	400-999-6126
✉	cn.market@abclonal.com.cn
🌐	www.abclonal.com.cn

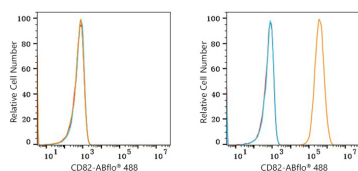
## Product Information

Source	Isotype	Purification
Rabbit	IgG	Affinity purification

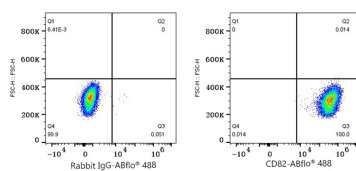
### Storage

Store at 2-8°C. Avoid freeze.  
Buffer: PBS with 0.09% Sodium azide, 0.2% BSA, pH7.3.

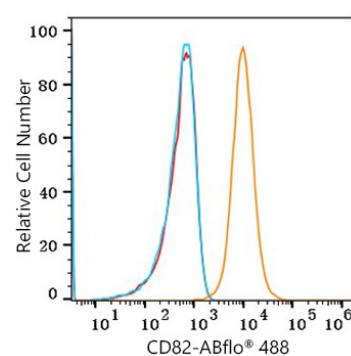
## Validation Data



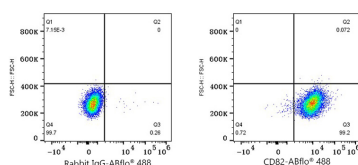
Flow cytometry:  $1 \times 10^6$  CHO cells (negative control, left) and CHO cells (Transfection, right) were surface-stained with ABflo® 488 Rabbit anti-Mouse CD82 mAb (A28045, 0.5 µg, orange line) or ABflo® 488 Rabbit IgG isotype control (A22069, 5 µl/Test, blue line). Non-fluorescently stained cells were used as blank control (red line).



Flow cytometry:  $1 \times 10^6$  CHO cells (Transfection, right) were surface-stained with ABflo® 488 Rabbit IgG isotype control (A22069, 5 µl/Test, left) or ABflo® 488 Rabbit anti-Mouse CD82 mAb (A28045, 0.5 µg, right).



Flow cytometry:  $1 \times 10^6$  C2C12 cells were surface-stained with ABflo® 488 Rabbit anti-Mouse CD82 mAb (A28045, 0.5 µg, orange line) or ABflo® 488 Rabbit IgG isotype control (A22069, 5 µl/Test, blue line). Non-fluorescently stained cells were used as blank control (red line).



Flow cytometry:  $1 \times 10^6$  C2C12 cells were surface-stained with ABflo® 488 Rabbit IgG isotype control (A22069, 5 µl/Test, left) or ABflo® 488 Rabbit anti-Mouse CD82 mAb (A28045, 0.5 µg, right).