

PE Rabbit anti-Mouse Ly-6G mAb

Catalog No.: A28037

Basic Information

Observed MW

Calculated MW

28kDa

Category

Primary antibody

Applications

FC

Cross-Reactivity

Mouse

CloneNo number

ARC75413

Conjugate

PE. Ex:565nm. Em:574nm.

Background

Located in external side of plasma membrane.

Recommended Dilutions

FC ≤0.25 µg per million cells
in 100 µl volume

Immunogen Information

Gene ID

546644

Swiss Prot

P35461

Immunogen

Recombinant protein (or fragment). This information is considered to be commercially sensitive.

Synonyms

Gr1; Gr-1; Ly-6G

Contact

 | 400-999-6126

 | cn.market@abclonal.com.cn

 | www.abclonal.com.cn

Product Information

Source

Rabbit

Isotype

IgG

Purification

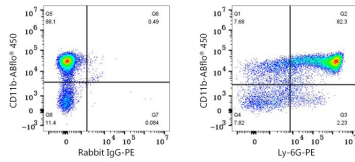
Affinity purification

Storage

Store at 2-8°C. Avoid freeze.

Buffer: PBS with 0.09% Sodium azide, 0.2% BSA, pH7.3.

Validation Data



Flow cytometry: 1X10⁶ C57BL/6 mouse bone marrow cells were surface-stained with ABflo® 450 Rabbit anti-Mouse CD11b mAb (A26229, 5 µl/Test) and PE Rabbit IgG isotype control (A24172, 5 µl/Test, left) or PE Rabbit anti-Mouse Ly-6G mAb (A28037, 0.25 µg, right).