

ABflo® 488 Rabbit anti-Human CD62P/P-selectin mAb

Catalog No.: A28012

Basic Information

Observed MW

Calculated MW

91kDa

Category

Primary antibody

Applications

FC

Cross-Reactivity

Human

CloneNo number

ARC74463

Conjugate

ABflo® 488. Ex:491nm. Em:516nm.

Background

This gene encodes a 140 kDa protein that is stored in the alpha-granules of platelets and Weibel-Palade bodies of endothelial cells. This protein redistributes to the plasma membrane during platelet activation and degranulation and mediates the interaction of activated endothelial cells or platelets with leukocytes. The membrane protein is a calcium-dependent receptor that binds to sialylated forms of Lewis blood group carbohydrate antigens on neutrophils and monocytes. Alternative splice variants may occur but are not well documented.

Recommended Dilutions

FC 5 µl per 10⁶ cells in
100 µl volume

Immunogen Information

Gene ID

6403

Swiss Prot

P16109

Immunogen

Recombinant protein (or fragment). This information is considered to be commercially sensitive.

Synonyms

CD62; GRMP; PSEL; CD62P; GMP140; LECAM3; PADGEM

Contact

☎ | 400-999-6126

✉ | cn.market@abclonal.com.cn

🌐 | www.abclonal.com.cn

Product Information

Source

Rabbit

Isotype

IgG

Purification

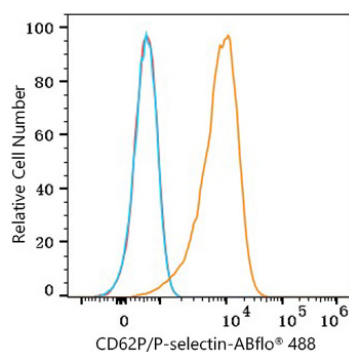
Affinity purification

Storage

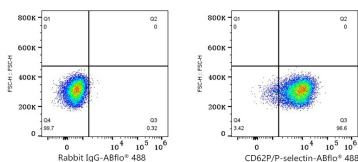
Store at 2-8°C. Avoid freeze.

Buffer: PBS with 0.09% Sodium azide, 0.2% BSA, pH7.3.

Validation Data



Flow cytometry: 1×10^6 HEL cells were surface-stained with ABflo® 488 Rabbit anti-Human CD62P/P-selectin mAb (A28012, 5 µl/Test, orange line) or ABflo® 488 Rabbit IgG isotype control (A22069, 5 µl/Test, blue line). Non-fluorescently stained cells were used as blank control (red line).



Flow cytometry: 1×10^6 HEL cells were surface-stained with ABflo® 488 Rabbit IgG isotype control (A22069, 5 µl/Test, left) or ABflo® 488 Rabbit anti-Human CD62P/P-selectin mAb (A28012, 5 µl/Test, right).