

CD133 Rabbit mAb

Catalog No.: A28001 **Recombinant**

Basic Information

Observed MW

120kDa

Calculated MW

97kDa

Category

Primary antibody

Applications

WB,IF/ICC,ELISA

Cross-Reactivity

Mouse, Rat

CloneNo number

ARC75301

Background

Predicted to enable actinin binding activity; cadherin binding activity; and cholesterol binding activity. Involved in camera-type eye photoreceptor cell differentiation and retina layer formation. Located in several cellular components, including brush border; photoreceptor outer segment; and prominosome. Is expressed in several structures, including brain; eye; genitourinary system; intestine; and neural ectoderm. Used to study retinitis pigmentosa 41. Human ortholog(s) of this gene implicated in cone-rod dystrophy 12; retinal macular dystrophy 2; and retinitis pigmentosa 41. Orthologous to human PROM1 (prominin 1).

Recommended Dilutions

WB 1:5000 - 1:10000**IF/ICC** 1:200 - 1:800

ELISA Recommended starting concentration is 1 µg/mL. Please optimize the concentration based on your specific assay requirements.

Immunogen Information

Gene ID

19126

Swiss Prot

O54990

Immunogen

Recombinant protein (or fragment). This information is considered to be commercially sensitive.

Synonyms

Prom; AC133; CD133; Prom-1; Proml1; 4932416E19Rik

Contact

 | 400-999-6126 | cn.market@abclonal.com.cn | www.abclonal.com.cn

Product Information

Source

Rabbit

Isotype

IgG

Purification

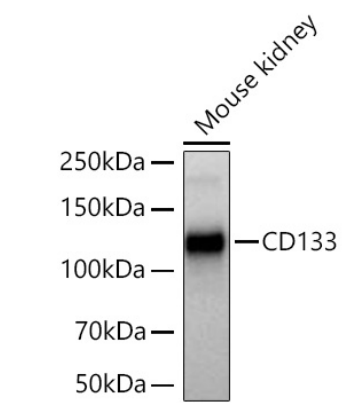
Affinity purification

Storage

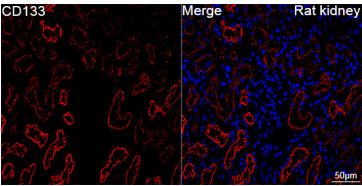
Store at -20°C. Avoid freeze / thaw cycles.

Buffer: PBS with 0.09% Sodium azide, 0.05% BSA, 50% glycerol, pH7.3.

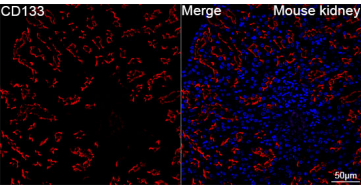
Validation Data



Western blot analysis of lysates from Mouse kidney using CD133 Rabbit mAb (A28001) at 1:5000 dilution incubated at room temperature for 1.5 hours.
Secondary antibody: HRP-conjugated Goat anti-Rabbit IgG (H+L) (AS014) at 1:10000 dilution.
Lysates/proteins: 25 µg per lane.
Blocking buffer: 3% nonfat dry milk in TBST.
Detection: ECL Basic Kit (RM00020).
Exposure time: 5s.



Confocal imaging of paraffin-embedded Rat kidney tissue using CD133 Rabbit mAb (A28001, dilution 1:200) followed by a further incubation with Cy3 Goat Anti-Rabbit IgG (H+L) (AS007, dilution 1:500) (Red). DAPI was used for nuclear staining (Blue). High pressure antigen retrieval performed with 0.01M Citrate Buffer (pH 6.0) prior to IF staining. Objective: 40x.



Confocal imaging of paraffin-embedded Mouse kidney tissue using CD133 Rabbit mAb (A28001, dilution 1:200) followed by a further incubation with Cy3 Goat Anti-Rabbit IgG (H+L) (AS007, dilution 1:500) (Red). DAPI was used for nuclear staining (Blue). High pressure antigen retrieval performed with 0.01M Citrate Buffer (pH 6.0) prior to IF staining. Objective: 40x.