

ABflo® 488 Rabbit anti-Cat CD8 alpha mAb

Catalog No.: A27984

Basic Information

Observed MW

Calculated MW

32- 34kDa

Category

Primary antibody

Applications

FC

Cross-Reactivity

Cat

CloneNo number

ARC69362

Conjugate

ABflo® 488. Ex:491nm. Em:516nm.

Background

The CD8 antigen is a cell surface glycoprotein found on most cytotoxic T lymphocytes that mediates efficient cell-cell interactions within the immune system. The CD8 antigen acts as a coreceptor with the T-cell receptor on the T lymphocyte to recognize antigens displayed by an antigen presenting cell in the context of class I MHC molecules. The coreceptor functions as either a homodimer composed of two alpha chains or as a heterodimer composed of one alpha and one beta chain. Both alpha and beta chains share significant homology to immunoglobulin variable light chains. This gene encodes the CD8 alpha chain. Multiple transcript variants encoding different isoforms have been found for this gene. The major protein isoforms of this gene differ by the presence or absence of a transmembrane domain and thus differ in being a membrane-anchored or secreted protein.

Recommended Dilutions

FC ≤0.5 µg per million cells
in 100 µl volume

Immunogen Information

Gene ID

493799

Swiss Prot

P41688

Immunogen

Recombinant protein (or fragment). This information is considered to be commercially sensitive.

Synonyms

CD8A

Contact

☎ | 400-999-6126

✉ | cn.market@abclonal.com.cn

🌐 | www.abclonal.com.cn

Product Information

Source

Rabbit

Isotype

IgG

Purification

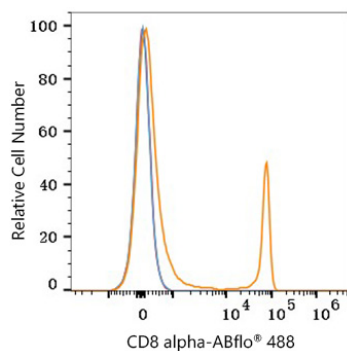
Affinity purification

Storage

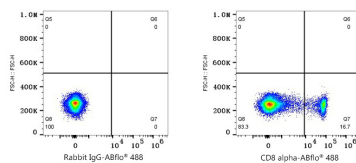
Store at 2-8°C. Avoid freeze.

Buffer: PBS with 0.09% Sodium azide, 0.2% BSA, pH7.3.

Validation Data



Flow cytometry: 1×10^6 Cat PBMC were surface-stained with ABflo® 488 Rabbit anti-Cat CD8 alpha mAb (A27984, 0.5 μ g, orange line) or ABflo® 488 Rabbit IgG isotype control (A22069, 5 μ l/Test, blue line). Non-fluorescently stained cells were used as blank control (red line). Cells in the lymphocyte gate were used for analysis.



Flow cytometry: 1×10^6 Cat PBMC were surface-stained with ABflo® 488 Rabbit IgG isotype control (A22069, 5 μ l/Test, left) or ABflo® 488 Rabbit anti-Cat CD8 alpha mAb (A27984, 0.5 μ g, right). Cells in the lymphocyte gate were used for analysis.