

APC Rabbit anti-Mouse CD21/CD35 mAb

Catalog No.: A27964

Basic Information

Observed MW

Calculated MW

113kDa

Category

Primary antibody

Applications

FC

Cross-Reactivity

Mouse

CloneNo number

ARC75079

Conjugate

APC. Ex:650nm. Em:660nm.

Background

Enables complement receptor activity. Acts upstream of or within with a negative effect on complement activation, alternative pathway. Acts upstream of or within several processes, including cellular response to lipopolysaccharide; immunoglobulin mediated immune response; and skeletal system development. Located in external side of plasma membrane. Is expressed in several structures, including brain; hemolymphoid system; liver; placenta; and yolk sac. Human ortholog(s) of this gene implicated in common variable immunodeficiency 7; nasopharynx carcinoma; and systemic lupus erythematosus. Orthologous to human CR2 (complement C3d receptor 2).

Recommended Dilutions

FC ≤0.25 µg per million cells
in 100 µl volume

Immunogen Information

Gene ID

12902

Swiss Prot

P19070

Immunogen

Recombinant protein (or fragment). This information is considered to be commercially sensitive.

Synonyms

Cr1; C3DR; CD21; CD35; Cr-1; Cr-2

Contact

☎ | 400-999-6126

✉ | cn.market@abclonal.com.cn

🌐 | www.abclonal.com.cn

Product Information

Source

Rabbit

Isotype

IgG

Purification

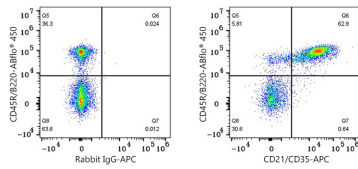
Affinity purification

Storage

Store at 2-8°C. Avoid freeze.

Buffer: PBS with 0.09% Sodium azide, 0.2% BSA, pH7.3.

Validation Data



Flow cytometry: 1X10⁶ C57BL/6 mouse splenocytes were surface-stained with ABflo® 450 Rat anti-Mouse CD45R/B220 mAb (A27783, 5 µl/Test) and APC Rabbit IgG isotype control (A24173, 5 µl/Test, left) or APC Rabbit anti-Mouse CD21/CD35 mAb (A27964, 0.25 µg, right).