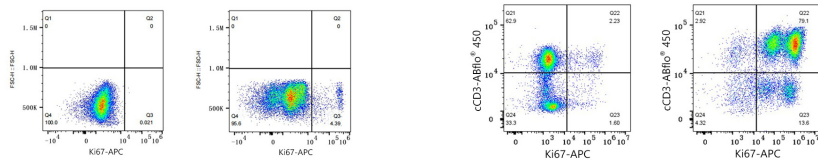




## Validation Data



Flow cytometry:  $1 \times 10^6$  knockout (KO) HeLa cells (negative control, left) and HeLa cells (right) were intracellularly-stained with APC Rabbit anti-Human/Monkey Ki67 mAb (A27946, 5 µl/Test).

Flow cytometry:  $1 \times 10^6$  Human PBMC (untreated, left) and Human PBMC (treated with 5 µg/mL PHA for 72 hours, right) were intracellularly-stained with ABflo® 450 Rabbit anti-Human cCD3 mAb (A27836, 5 µl/Test) and APC Rabbit anti-Human/Monkey Ki67 mAb (A27946, 5 µl/Test). Cells in the lymphocyte gate were used for analysis.