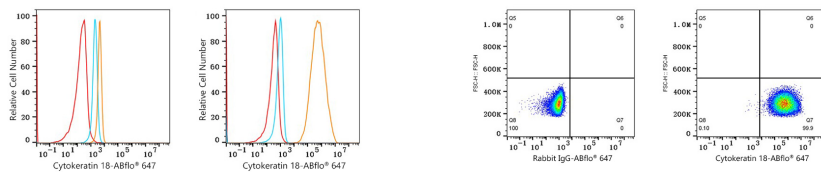


Validation Data



Flow cytometry: 1×10^6 HL-60 cells (negative control, left) and MCF7 cells (right) were intracellularly-stained with ABflo® 647 Rabbit anti-Human Cytokeratin 18 mAb (A27944, 5 μ l/Test, orange line) or ABflo® 647 Rabbit IgG isotype control (A22070, 5 μ l/Test, blue line). Non-fluorescently stained cells were used as blank control (red line).

Flow cytometry: 1×10^6 MCF7 cells were intracellularly-stained with ABflo® 647 Rabbit IgG isotype control (A22070, 5 μ l/Test, left) or ABflo® 647 Rabbit anti-Human Cytokeratin 18 mAb (A27944, 5 μ l/Test, right).