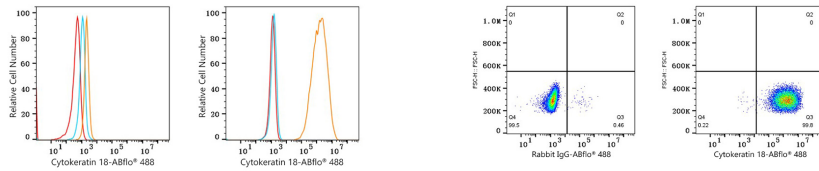




## Validation Data



Flow cytometry:  $1 \times 10^6$  HL-60 cells (negative control, left) and MCF7 cells (right) were intracellularly-stained with ABflo® 488 Rabbit anti-Human Cytokeratin 18 mAb (A27943,5  $\mu$ l/Test, orange line) or ABflo® 488 Rabbit IgG isotype control (A22069,5  $\mu$ l/Test, blue line). Non-fluorescently stained cells were used as blank control (red line).

Flow cytometry:  $1 \times 10^6$  MCF7 cells were intracellularly-stained with ABflo® 488 Rabbit IgG isotype control (A22069,5  $\mu$ l/Test, left) or ABflo® 488 Rabbit anti-Human Cytokeratin 18 mAb (A27943,5  $\mu$ l/Test, right).