

# PE Rabbit anti-Human CD205/DEC-205 mAb

Catalog No.: A27942

## Basic Information

### Observed MW

### Calculated MW

198kDa

### Category

Primary antibody

### Applications

FC

### Cross-Reactivity

Human

### CloneNo number

ARC74920

### Conjugate

PE. Ex:565nm. Em:574nm.

## Background

CD205 is a 210-kDa type C lectin transmembrane protein, also known as DEC-205. It belongs to the macrophage mannose receptor family and is highly expressed in dendritic cells and thymic epithelial cells. Unlike murine CD205, human CD205 is also expressed at low levels on T cells, B cells, NK cells, and monocytes. CD205 functions as an endocytic receptor involved in antigen uptake/processing and the clearance of apoptotic cells.

## Recommended Dilutions

FC 5 µl per 10<sup>6</sup> cells in  
100 µl volume

## Immunogen Information

### Gene ID

4065

### Swiss Prot

O60449

### Immunogen

Recombinant protein (or fragment). This information is considered to be commercially sensitive.

### Synonyms

CD205; LY-75; CLEC13B; DEC-205; GP200-MR6

## Contact

☎ | 400-999-6126

✉ | [cn.market@abclonal.com.cn](mailto:cn.market@abclonal.com.cn)

🌐 | [www.abclonal.com.cn](http://www.abclonal.com.cn)

## Product Information

### Source

Rabbit

### Isotype

IgG

### Purification

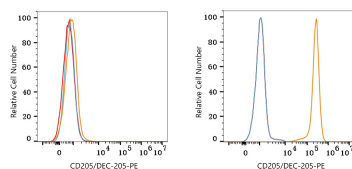
Affinity purification

### Storage

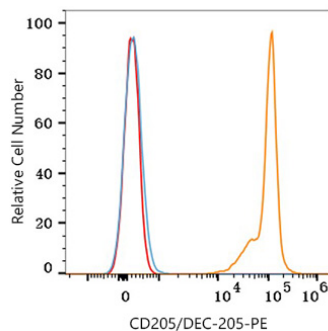
Store at 2-8°C. Avoid freeze.

Buffer: PBS with 0.09% Sodium azide, 0.2% BSA, pH7.3.

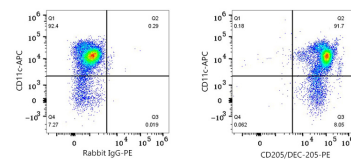
## Validation Data



Flow cytometry:  $1 \times 10^6$  K-562 cells (negative control, left) and KARPAS-299 cells (right) were surface-stained with PE Rabbit anti-Human CD205/DEC-205 mAb (A27942, 5  $\mu$ l/Test, orange line) or PE Rabbit IgG isotype control (A24172, 5  $\mu$ l/Test, blue line). Non-fluorescently stained cells were used as blank control (red line).



Flow cytometry:  $1 \times 10^6$  Human PBMC were surface-stained with PE Rabbit anti-Human CD205/DEC-205 mAb (A27942, 5  $\mu$ l/Test, orange line) or PE Rabbit IgG isotype control (A24172, 5  $\mu$ l/Test, blue line). Non-fluorescently stained cells were used as blank control (red line). Cells in the monocyte gate were used for analysis.



Flow cytometry:  $1 \times 10^6$  Human PBMC were surface-stained with APC Mouse anti-Human CD11c mAb (A22847, 5  $\mu$ l/Test) PE Rabbit IgG isotype control (A24172, 5  $\mu$ l/Test, left) or PE Rabbit anti-Human CD205/DEC-205 mAb (A27942, 5  $\mu$ l/Test, right). Cells in the monocyte gate were used for analysis.