

# PE Rabbit anti-Mouse Podoplanin mAb

Catalog No.: A27940

## Basic Information

### Observed MW

### Calculated MW

18kDa

### Category

Primary antibody

### Applications

FC

### Cross-Reactivity

Mouse

### CloneNo number

ARC74547

### Conjugate

PE. Ex:565nm. Em:574nm.

## Background

Predicted to enable chaperone binding activity; chemokine binding activity; and signaling receptor binding activity. Involved in several processes, including lymph node development; lymphatic endothelial cell fate commitment; and positive regulation of platelet aggregation. Acts upstream of or within several processes, including lung alveolus development; lymphangiogenesis; and prostaglandin metabolic process. Located in several cellular components, including external side of plasma membrane; lamellipodium; and ruffle. Is expressed in several structures, including alimentary system; cardiovascular system; central nervous system; hemolymphoid system; and reproductive system. Orthologous to human PDPN (podoplanin).

## Recommended Dilutions

FC ≤0.5 µg per million cells  
in 100 µl volume

## Immunogen Information

### Gene ID

14726

### Swiss Prot

Q62011

### Immunogen

Recombinant protein (or fragment). This information is considered to be commercially sensitive.

### Synonyms

E11; T1a; Gp38; OTS-8; T1alpha; RANDAM-2; T1-alpha

## Contact

☎ | 400-999-6126

✉ | [cn.market@abclonal.com.cn](mailto:cn.market@abclonal.com.cn)

🌐 | [www.abclonal.com.cn](http://www.abclonal.com.cn)

## Product Information

### Source

Rabbit

### Isotype

IgG

### Purification

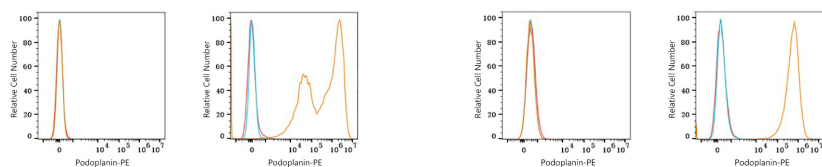
Affinity purification

### Storage

Store at 2-8°C. Avoid freeze.

Buffer: PBS with 0.09% Sodium azide, 0.2% BSA, pH7.3.

## Validation Data



Flow cytometry:  $1 \times 10^6$  293T cells (negative control, left) and 293T (Transfection, right) cells were surface-stained with PE Rabbit anti-Mouse Podoplanin mAb (A27940, 0.5  $\mu$ g, orange line) or PE Rabbit IgG isotype control (A24172, 5  $\mu$ l/Test, blue line). Non-fluorescently stained cells were used as blank control (red line).

Flow cytometry:  $1 \times 10^6$  Neuro-2a cells (negative control, left) and C2C12 cells (right) were surface-stained with PE Rabbit anti-Mouse Podoplanin mAb (A27940, 0.5  $\mu$ g, orange line) or PE Rabbit IgG isotype control (A24172, 5  $\mu$ l/Test, blue line). Non-fluorescently stained cells were used as blank control (red line).