

ABflo® 647 Rabbit anti-Human HMOX1 mAb

Catalog No.: A27939

Basic Information

Observed MW

Calculated MW

33kDa

Category

Primary antibody

Applications

FC (intra)

Cross-Reactivity

Human

CloneNo number

ARC75796

Conjugate

ABflo® 647. Ex:648nm. Em:664nm.

Background

Heme oxygenase, an essential enzyme in heme catabolism, cleaves heme to form biliverdin, which is subsequently converted to bilirubin by biliverdin reductase, and carbon monoxide, a putative neurotransmitter. Heme oxygenase activity is induced by its substrate heme and by various nonheme substances. Heme oxygenase occurs as 2 isozymes, an inducible heme oxygenase-1 and a constitutive heme oxygenase-2. HMOX1 and HMOX2 belong to the heme oxygenase family.

Recommended Dilutions

FC (intra) 5 µl per 10⁶ cells in
100 µl volume

Immunogen Information

Gene ID

3162

Swiss Prot

P09601

Immunogen

Recombinant protein (or fragment). This information is considered to be commercially sensitive.

Synonyms

HO-1; HSP32; HMOX1D; bK286B10

Contact

☎ | 400-999-6126

✉ | cn.market@abclonal.com.cn

🌐 | www.abclonal.com.cn

Product Information

Source

Rabbit

Isotype

IgG

Purification

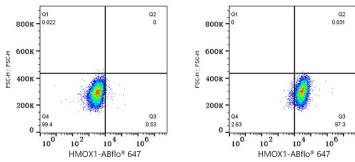
Affinity purification

Storage

Store at 2-8°C. Avoid freeze.

Buffer: PBS with 0.09% Sodium azide, 0.2% BSA, pH7.3.

Validation Data



Flow cytometry: 1X10⁶ knockout (KO) HeLa cells (negative control,left) and HeLa cells (right) were intracellularly-stained with ABflo® 647 Rabbit anti-Human HMOX1 mAb (A27939,5 µl/Test)