

# APC/Cyanine7 Rabbit anti-Human CD62L/L-Selectin mAb

Catalog No.: A27928

## Basic Information

### Observed MW

Refer to figures

### Calculated MW

42kDa

### Category

Primary antibody

### Applications

FC

### Cross-Reactivity

Human

### CloneNo number

ARC60035

### Conjugate

APC-Cy7. Ex:651nm. Em:779nm.

## Recommended Dilutions

**FC** 5  $\mu$ l per  $10^6$  cells in  
100  $\mu$ l volume

## Background

This gene encodes a cell surface adhesion molecule that belongs to a family of adhesion/homing receptors. The encoded protein contains a C-type lectin-like domain, a calcium-binding epidermal growth factor-like domain, and two short complement-like repeats. The gene product is required for binding and subsequent rolling of leucocytes on endothelial cells, facilitating their migration into secondary lymphoid organs and inflammation sites. Single-nucleotide polymorphisms in this gene have been associated with various diseases including immunoglobulin A nephropathy. Alternatively spliced transcript variants have been found for this gene.

## Immunogen Information

### Gene ID

6402

### Swiss Prot

P14151

### Immunogen

Recombinant protein (or fragment). This information is considered to be commercially sensitive.

### Synonyms

TQ1; LAM1; LEU8; LNHR; LSEL; CD62L; LYAM1; PLNHR; LECAM1

## Contact

☎ | 400-999-6126

✉ | [cn.market@abclonal.com.cn](mailto:cn.market@abclonal.com.cn)

🌐 | [www.abclonal.com.cn](http://www.abclonal.com.cn)

## Product Information

### Source

Rabbit

### Isotype

IgG

### Purification

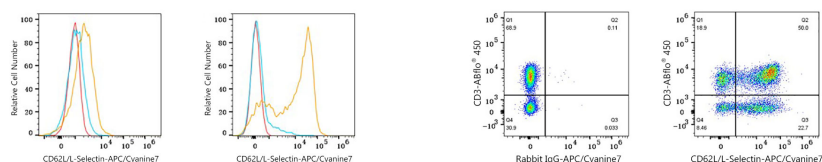
Affinity purification

### Storage

Store at 2-8°C. Avoid freeze.

Buffer: PBS with 0.09% Sodium azide, 0.2% BSA, pH7.3.

## Validation Data



Flow cytometry: 1X10<sup>6</sup> T-47D cells (negative control, left) and Human PBMC (right) were surface-stained with APC/Cyanine7 Rabbit anti-Human CD62L/L-Selectin mAb (A27928, 5 µl/Test, orange line) or APC/Cyanine7 Rabbit IgG isotype control (5 µl/Test, blue line). Non-fluorescently stained cells were used as blank control (red line). Cells in the lymphocyte gate were used for analysis.

Flow cytometry: 1X10<sup>6</sup> Human PBMC were surface-stained with ABflo<sup>®</sup> 450 Rabbit anti-Human/Monkey CD3 mAb (A27177, 5 µl/Test) and APC/Cyanine7 Rabbit IgG isotype control (5 µl/Test, left) or APC/Cyanine7 Rabbit anti-Human CD62L/L-Selectin mAb (A27928, 5 µl/Test). Cells in the lymphocyte gates were used for analysis.