

PE/Cyanine5 Rabbit anti-Mouse CD5 mAb

Catalog No.: A27926

Basic Information

Observed MW**Calculated MW**

54kDa

Category

Primary antibody

Applications

FC

Cross-Reactivity

Mouse

CloneNo number

ARC61614

Conjugate

PE-Cy5. Ex:565nm. Em:666nm.

Background

CD5 is a type I transmembrane protein belonging to the scavenger receptor cysteine-enriched (SRCR) family, characterized by the presence of at least one SRCR domain containing 90-110 amino acids. CD5 is expressed in all mature T cells, B-1A subsets of mature B cells, and certain leukemia B cells. It is elevated in regulatory T and B cells (Tregs/Bregs). CD5 expression was also elevated in incompetent T and B cells. Elevated levels of CD5 have also been found in many autoimmune diseases. CD5 binds to T cell receptors (TCR) and negatively regulates T cell activation and differentiation. The expression of CD5 in tumor-infiltrating T lymphocytes was negatively correlated with their antitumor activity. Recently, it has been reported that CD5 binds directly to IL6 and mediates downstream signal transduction. CD5+ B cells promote tumor growth in animal models. Agents targeting CD5 are being actively explored as therapeutic interventions for cancer and other conditions.

Recommended Dilutions

FC ≤0.5 µg per million cells
in 100 µl volume

Immunogen Information

Gene ID

12507

Swiss Prot

P13379

Immunogen

Recombinant protein (or fragment). This information is considered to be commercially sensitive.

Synonyms

Ly-1; Ly-A; Ly-12; Lyt-1

Contact

 | 400-999-6126 | cn.market@abclonal.com.cn | www.abclonal.com.cn

Product Information

Source

Rabbit

Isotype

IgG

Purification

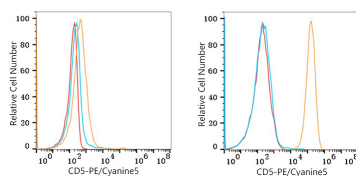
Affinity purification

Storage

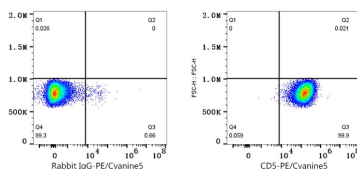
Store at 2-8°C. Avoid freeze.

Buffer: PBS with 0.09% Sodium azide, 0.2% BSA, pH7.3.

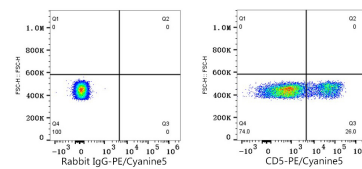
Validation Data



Flow cytometry: 1×10^6 A20 cells (negative control, left) and CTLL-2 cells (right) were surface-stained with PE/Cyanine5 Rabbit anti-Mouse CD5 mAb (A27926, 0.5 μ g, orange line) or PE/Cyanine5 Rabbit IgG isotype control (0.5 μ g, blue line). Non-fluorescently stained cells were used as blank control (red line).



Flow cytometry: 1×10^6 CTLL-2 cells were surface-stained with PE/Cyanine5 Rabbit IgG isotype control (0.5 μ g, left) or PE/Cyanine5 Rabbit anti-Mouse CD5 mAb (A27926, 0.5 μ g, right).



Flow cytometry: 1×10^6 C57BL/6 mouse splenocytes were surface-stained with PE/Cyanine5 Rabbit IgG isotype control (0.5 μ g, left) or PE/Cyanine5 Rabbit anti-Mouse CD5 mAb (A27926, 0.5 μ g, right).