

ABflo® 647 Rabbit anti-Mouse CD352/SLAMF6 mAb

Catalog No.: A27923

Basic Information

Observed MW**Calculated MW**

39kDa

Category

Primary antibody

Applications

FC

Cross-Reactivity

Mouse

CloneNo number

ARC75415

Conjugate

ABflo® 647. Ex:648nm. Em:664nm.

Recommended Dilutions

FC ≤0.5 µg per million cells
in 100 µl volume

Background

SLAMF6 (CD352/NTB-A) is a type I transmembrane glycoprotein belonging to the signaling lymphocyte activation molecule (SLAM) family of immunoregulatory receptors. Like other members of the SLAM receptor family, SLAMF6 possesses an extracellular region containing immunoglobulin (Ig)-like domains and an intracellular domain harboring conserved tyrosine-based signaling motifs. Upon phosphorylation, these motifs recruit the SAP (SLAM-associated protein) and EAT-2 adaptor signaling molecules. SLAMF6 is expressed on the surface of multiple immune cell lineages, including B cells, T cells, and natural killer (NK) cells. Its activation is triggered by homophilic interactions mediated through its extracellular domain. Functional studies demonstrate that SLAMF6 engagement in T cells promotes cellular activation and cytokine production. Similarly, ligand-induced homotypic binding of SLAMF6 in NK cells initiates signaling cascades that enhance proliferation, cytotoxic activity, and cytokine secretion.

Immunogen Information

Gene ID

30925

Swiss Prot

Q9ET39

Immunogen

Recombinant protein (or fragment). This information is considered to be commercially sensitive.

Synonyms

KAL1; NTBA; KAL1b; Ly108; NTB-A; SF2000

Contact

 | 400-999-6126 | cn.market@abclonal.com.cn | www.abclonal.com.cn

Product Information

Source

Rabbit

Isotype

IgG

Purification

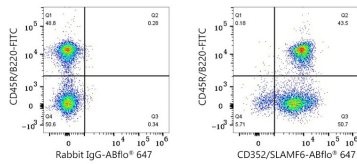
Affinity purification

Storage

Store at 2-8°C. Avoid freeze.

Buffer: PBS with 0.09% Sodium azide, 0.2% BSA, pH7.3.

Validation Data



Flow cytometry: 1X10⁶ C57BL/6 mouse splenocytes were surface-stained with FITC anti-Mouse/Human CD45R/B220 mAb (A25655, 5 µl/Test) and ABflo® 647 Rabbit IgG isotype control (A22070, 5 µl/Test, left) or ABflo® 647 Rabbit anti-Mouse CD352/SLAMF6 mAb (A27923, 0.5 µg, right).