

# PRODH Rabbit mAb

Catalog No.: A27920 **Recombinant**

## Basic Information

### Observed MW

68kDa

### Calculated MW

68kDa

### Category

Primary antibody

### Applications

WB,IP,IHC-P,ELISA

### Cross-Reactivity

Mouse, Rat

### CloneNo number

ARC66680

## Background

This gene encodes a mitochondrial protein that catalyzes the first step in proline degradation. Mutations in this gene are associated with hyperprolinemia type 1 and susceptibility to schizophrenia 4 (SCZD4). This gene is located on chromosome 22q11.21, a region which has also been associated with the contiguous gene deletion syndromes, DiGeorge and CATCH22. Alternatively spliced transcript variants encoding different isoforms have been found for this gene.

## Recommended Dilutions

**WB** 1:2500 - 1:10000

**IP** 0.5µg-4µg antibody for  
500µg-700µg extracts of  
whole cells

**IHC-P** 1:200 - 1:800

**ELISA** Recommended starting  
concentration is 1 µg/mL.  
Please optimize the  
concentration based on  
your specific assay  
requirements.

## Immunogen Information

### Gene ID

5625

### Swiss Prot

O43272

### Immunogen

Recombinant protein (or fragment). This information is considered to be commercially sensitive.

### Synonyms

POX; PIG6; HSPOX2; PRODH1; PRODH2; TP53I6

## Contact

☎ | 400-999-6126

✉ | [cn.market@abclonal.com.cn](mailto:cn.market@abclonal.com.cn)

🌐 | [www.abclonal.com.cn](http://www.abclonal.com.cn)

## Product Information

### Source

Rabbit

### Isotype

IgG

### Purification

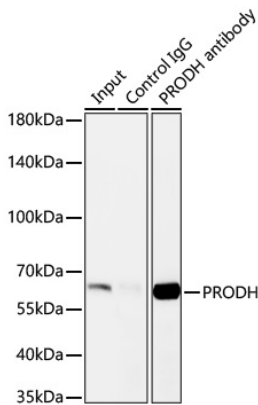
Affinity purification

### Storage

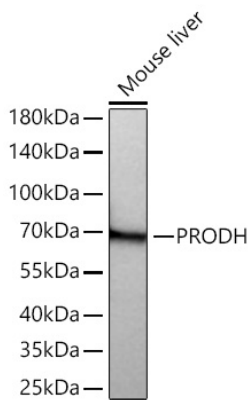
Store at -20°C. Avoid freeze / thaw cycles.

Buffer: PBS with 0.09% Sodium azide, 0.05% BSA, 50% glycerol, pH7.3.

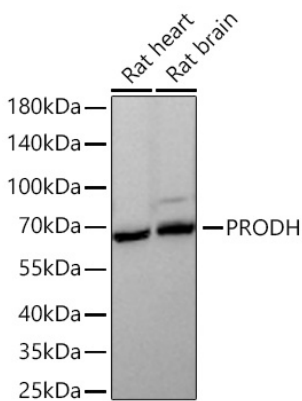
Validation Data



Immunoprecipitation of PRODH from 600 µg extracts of Mouse liver was performed using 2 µg of PRODH Rabbit mAb (A27920). Rabbit IgG isotype control (AC005) was used to precipitate the Control IgG sample. IP samples were eluted with 1X reducing Laemmli Buffer. The Input lane represents 10% of the total input. Western blot analysis of immunoprecipitates was conducted using PRODH Rabbit mAb (A27920) at a dilution of 1:5000.



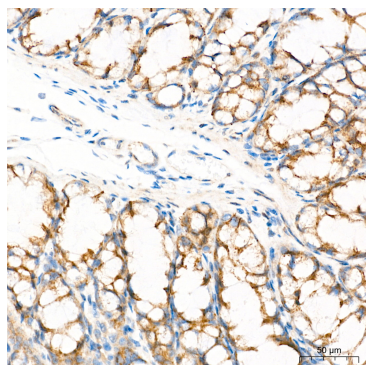
Western blot analysis of lysates from Mouse liver using PRODH Rabbit mAb (A27920) at 1:5000 dilution incubated overnight at 4°C.  
Secondary antibody: HRP-conjugated Goat anti-Rabbit IgG (H+L) (AS014) at 1:10000 dilution.  
Lysates/proteins: 25 µg per lane.  
Blocking buffer: 3% nonfat dry milk in TBST.  
Detection: ECL Basic Kit (RM00020).  
Exposure time: 5s.



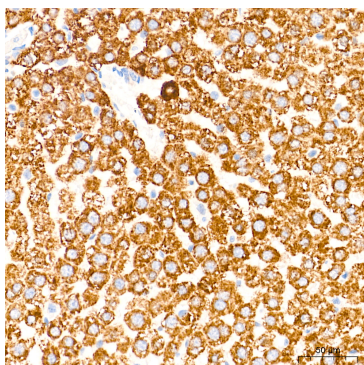
Western blot analysis of various lysates using PRODH Rabbit mAb (A27920) at 1:5000 dilution incubated overnight at 4°C.  
Secondary antibody: HRP-conjugated Goat anti-Rabbit IgG (H+L) (AS014) at 1:10000 dilution.  
Lysates/proteins: 25 µg per lane.  
Blocking buffer: 3% nonfat dry milk in TBST.  
Detection: ECL Basic Kit (RM00020).  
Exposure time: 90s.

## Validation Data

---



Immunohistochemistry analysis of paraffin-embedded Mouse colon tissue using PRODH Rabbit mAb (A27920) at a dilution of 1:500 (40x lens). High pressure antigen retrieval performed with 0.01M Tris-EDTA Buffer (pH 9.0) prior to IHC staining.



Immunohistochemistry analysis of paraffin-embedded Rat liver tissue using PRODH Rabbit mAb (A27920) at a dilution of 1:500 (40x lens). High pressure antigen retrieval performed with 0.01M Tris-EDTA Buffer (pH 9.0) prior to IHC staining.