

OLIG2 Rabbit mAb

Catalog No.: A27904 **Recombinant**

Basic Information

Observed MW

37kDa

Calculated MW

32kDa

Category

Primary antibody

Applications

WB, IF/ICC, IHC-P, ELISA

Cross-Reactivity

Human, Mouse, Rat

CloneNo number

ARC75695

Background

This gene encodes a basic helix-loop-helix transcription factor which is expressed in oligodendroglial tumors of the brain. The protein is an essential regulator of ventral neuroectodermal progenitor cell fate. The gene is involved in a chromosomal translocation t(14;21)(q11.2;q22) associated with T-cell acute lymphoblastic leukemia. Its chromosomal location is within a region of chromosome 21 which has been suggested to play a role in learning deficits associated with Down syndrome.

Recommended Dilutions

WB 1:5000 - 1:30000

IF/ICC 1:200 - 1:2000

IHC-P 1:200 - 1:800

ELISA Recommended starting concentration is 1 µg/mL. Please optimize the concentration based on your specific assay requirements.

Immunogen Information

Gene ID

10215

Swiss Prot

Q13516

Immunogen

Recombinant protein (or fragment). This information is considered to be commercially sensitive.

Synonyms

BHLHB1; OLIGO2; RACK17; PRKCBP2; bHLHe19

Contact

☎ | 400-999-6126

✉ | cn.market@abclonal.com.cn

🌐 | www.abclonal.com.cn

Product Information

Source

Rabbit

Isotype

IgG

Purification

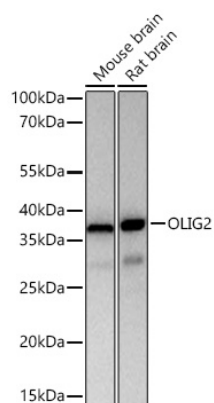
Affinity purification

Storage

Store at -20°C. Avoid freeze / thaw cycles.

Buffer: PBS with 0.09% Sodium azide, 0.05% BSA, 50% glycerol, pH7.3.

Validation Data



Western blot analysis of various lysates using OLIG2 Rabbit mAb (A27904) at 1:5000 dilution incubated overnight at 4°C.

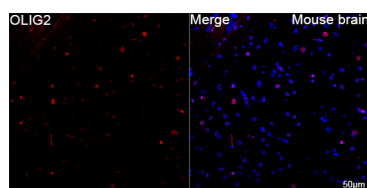
Secondary antibody: HRP-conjugated Goat anti-Rabbit IgG (H+L) (AS014) at 1:10000 dilution.

Lysates/proteins: 25 µg per lane.

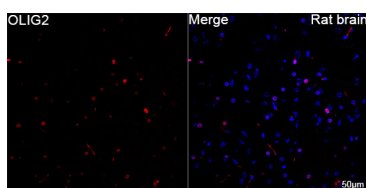
Blocking buffer: 3% nonfat dry milk in TBST.

Detection: ECL Basic Kit (RM00020).

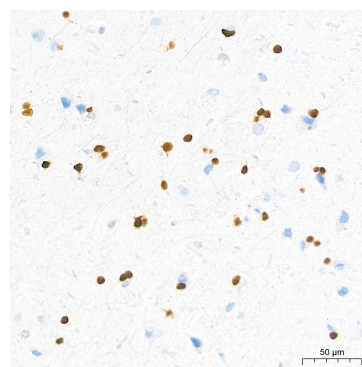
Exposure time: 10s.



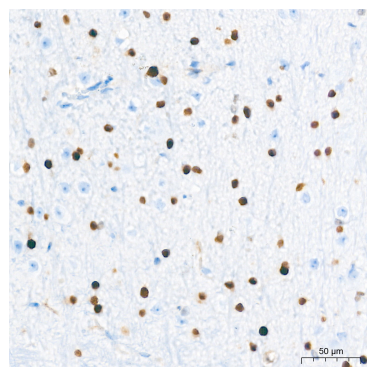
Confocal imaging of paraffin-embedded Mouse brain tissue using OLIG2 Rabbit mAb (A27904, dilution 1:200) followed by a further incubation with Cy3 Goat Anti-Rabbit IgG (H+L) (AS007, dilution 1:500) (Red). DAPI was used for nuclear staining (Blue). High pressure antigen retrieval performed with 0.01M Citrate Buffer (pH 6.0) prior to IF staining. Objective: 40x.



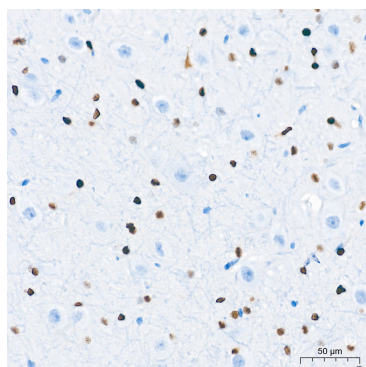
Confocal imaging of paraffin-embedded Rat brain tissue using OLIG2 Rabbit mAb (A27904, dilution 1:200) followed by a further incubation with Cy3 Goat Anti-Rabbit IgG (H+L) (AS007, dilution 1:500) (Red). DAPI was used for nuclear staining (Blue). High pressure antigen retrieval performed with 0.01M Citrate Buffer (pH 6.0) prior to IF staining. Objective: 40x.



Immunohistochemistry analysis of paraffin-embedded Human brain tissue using OLIG2 Rabbit mAb (A27904) at a dilution of 1:500 (40x lens). High pressure antigen retrieval performed with 0.01M Tris-EDTA Buffer (pH 9.0) prior to IHC staining.



Immunohistochemistry analysis of paraffin-embedded Mouse brain tissue using OLIG2 Rabbit mAb (A27904) at a dilution of 1:500 (40x lens). High pressure antigen retrieval performed with 0.01M Tris-EDTA Buffer (pH 9.0) prior to IHC staining.



Immunohistochemistry analysis of paraffin-embedded Rat brain tissue using OLIG2 Rabbit mAb (A27904) at a dilution of 1:500 (40x lens). High pressure antigen retrieval performed with 0.01M Tris-EDTA Buffer (pH 9.0) prior to IHC staining.