

# ABflo® 450 Rabbit anti-Human/Monkey CD64/FcγRI mAb

Catalog No.: A27886

## Basic Information

### Observed MW

### Calculated MW

43kDa

### Category

Primary antibody

### Applications

FC

### Cross-Reactivity

Human, Cynomolgus

### CloneNo number

ARC53680

### Conjugate

ABflo® 450. Ex:406nm. Em:445nm.

## Background

This gene encodes a protein that plays an important role in the immune response. This protein is a high-affinity Fc-gamma receptor. The gene is one of three related gene family members located on chromosome 1.

## Recommended Dilutions

FC 5 µl per 10<sup>6</sup> cells in  
100 µl volume

## Immunogen Information

### Gene ID

Hu 2209 Cyon 102147198

### Swiss Prot

P12314

### Immunogen

Recombinant protein (or fragment). This information is considered to be commercially sensitive.

### Synonyms

CD64; FCG1; FCRI; CD64A; FCGR1; IGFR1; FcγRI

## Contact

☎ | 400-999-6126

✉ | [cn.market@abclonal.com.cn](mailto:cn.market@abclonal.com.cn)

🌐 | [www.abclonal.com.cn](http://www.abclonal.com.cn)

## Product Information

### Source

Rabbit

### Isotype

IgG

### Purification

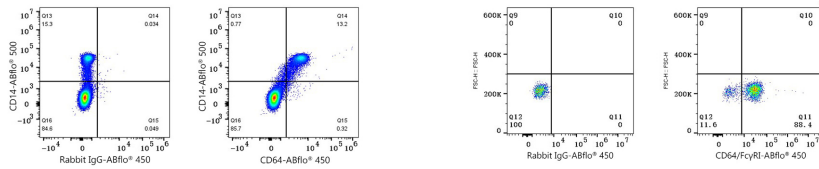
Affinity purification

### Storage

Store at 2-8°C. Avoid freeze.

Buffer: PBS with 0.09% Sodium azide, 0.2% BSA, pH7.3.

## Validation Data



Flow cytometry:  $1 \times 10^6$  Human PBMC were surface-stained with ABflo® 500 Rabbit anti-Human/Monkey CD14 mAb (A26871, 5  $\mu$ l/Test) and ABflo® 450 Rabbit IgG isotype control (A27451, 5  $\mu$ l/Test, left) or ABflo® 450 Rabbit anti-Human/Monkey CD64 mAb (A27886, 5  $\mu$ l/Test, right). Cells in the lymphocyte and monocyte gates were used for analysis.

Flow cytometry:  $1 \times 10^6$  Cynomolgus peripheral blood mononuclear cells were surface-stained with ABflo® 450 Rabbit IgG isotype control (A27451, 5  $\mu$ l/Test, left) or ABflo® 450 Rabbit anti-Human/Monkey CD64/Fc $\gamma$ RI mAb (A27886, 5  $\mu$ l/Test, right). Cells in the monocyte gate were used for analysis.